

Write your name here

Surname					Other names				
Centre Number					Candidate Number				
<input type="text"/> <input type="text"/> <input type="text"/> <input type="text"/> <input type="text"/>					<input type="text"/> <input type="text"/> <input type="text"/> <input type="text"/> <input type="text"/>				

Edexcel GCE

Geography
Advanced Subsidiary
Unit 2: Geographical Investigations

Friday 22 January 2010 – Afternoon Time: 1 hour 15 minutes	Paper Reference 6GE02/01
--	------------------------------------

You must have: Resource Booklet (enclosed)	Total Marks
--	-------------

Instructions

- Use **black** ink or ball-point pen.
- **Fill in the boxes** at the top of this page with your name, centre number and candidate number.
- Answer **ONE** question in Section A and **ONE** question in Section B.
- Answer the questions in the spaces provided
– *there may be more space than you need.*

Information

- The total mark for this paper is 70.
- The marks for **each** question are shown in brackets
– *use this as a guide as to how much time to spend on each question.*
- The quality of your written communication will be assessed in ALL your responses
– *you should take particular care with your spelling, punctuation and grammar, as well as the clarity of expression.*

Advice

- Read each question carefully before you start to answer it.
- Keep an eye on the time.
- Spend approximately 5 minutes planning and 35 minutes on Section A and 35 minutes on Section B.
- Check your answers if you have time at the end.

Turn over ►

M35966A

©2010 Edexcel Limited.

1/1/1/1



edexcel 
 advancing learning, changing lives

(c) Using examples, explain how different **strategies** can be used to **reduce the impact** of drought.

(10)

A series of horizontal dotted lines for writing the answer.



(b) Describe how **lack of access to services** can help to create **marginalised** groups in **rural** areas.

(10)

A series of horizontal dotted lines for writing the answer.



(c) Describe the **fieldwork** and **research** you would undertake in order to investigate the success of strategies to reduce **rural** or **urban** inequality.

(15)

A series of horizontal dotted lines for writing the answer.



Handwriting practice area with 30 horizontal dotted lines.

(Total for Question 3 = 35 marks)



Candidates should use the resources provided, their own ideas and relevant fieldwork and research which they have carried out.

REBRANDING PLACES

If you choose to answer Question 4, put a cross in this box .

4 Study Figure 4.

(a) Suggest how the information shows that some seaside towns are in **greater need** of rebranding.

(10)

Area with horizontal dotted lines for writing the answer.



(b) Describe how some places have used sport and leisure as a **catalyst** to 'kick-start' rebranding.

(10)

A series of horizontal dotted lines for writing.



Handwriting practice area with 25 horizontal dotted lines.

(Total for Question 4 = 35 marks)

TOTAL FOR SECTION B = 35 MARKS
TOTAL FOR PAPER = 70 MARKS



Edexcel GCE

Geography

Advanced Subsidiary

Unit 2: Geographical Investigations

RESOURCE BOOKLET

Friday 22 January 2010 – Afternoon

Paper Reference

6GE02/01

Do not return this Resource Booklet with the question paper.

Turn over ►

M35966A

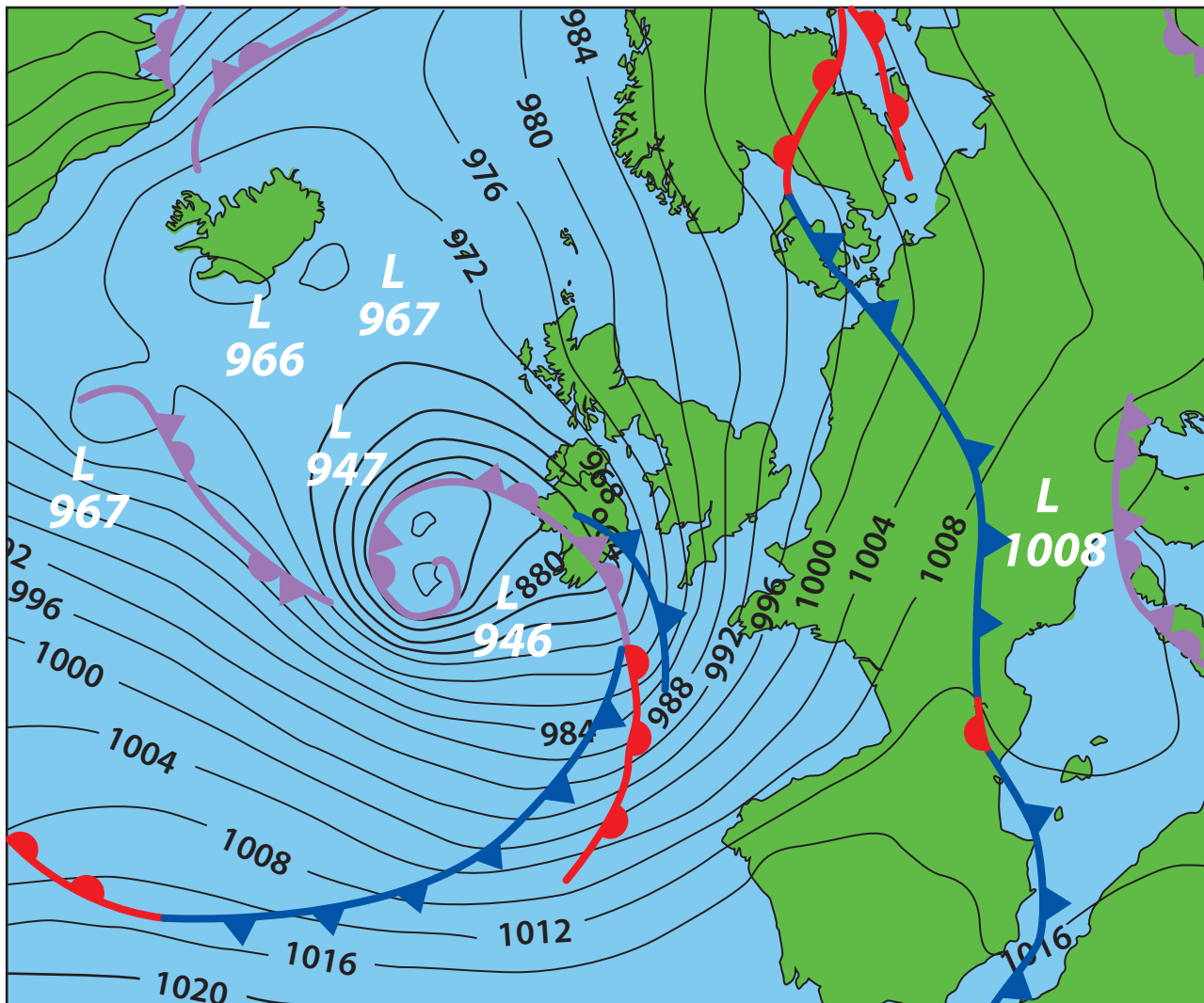
©2010 Edexcel Limited.

1/1/1/1



edexcel 
advancing learning, changing lives

Figure 1 Weather situation Monday 10 March 2008



Key




-  Cold front
-  Warm front
-  Occluded front

Figure 2 Contrasting resorts: Great Yarmouth, UK and Alicante, Spain

Great Yarmouth, UK

A traditional Victorian seaside resort in eastern England with a population of approximately 90,000 (2006).

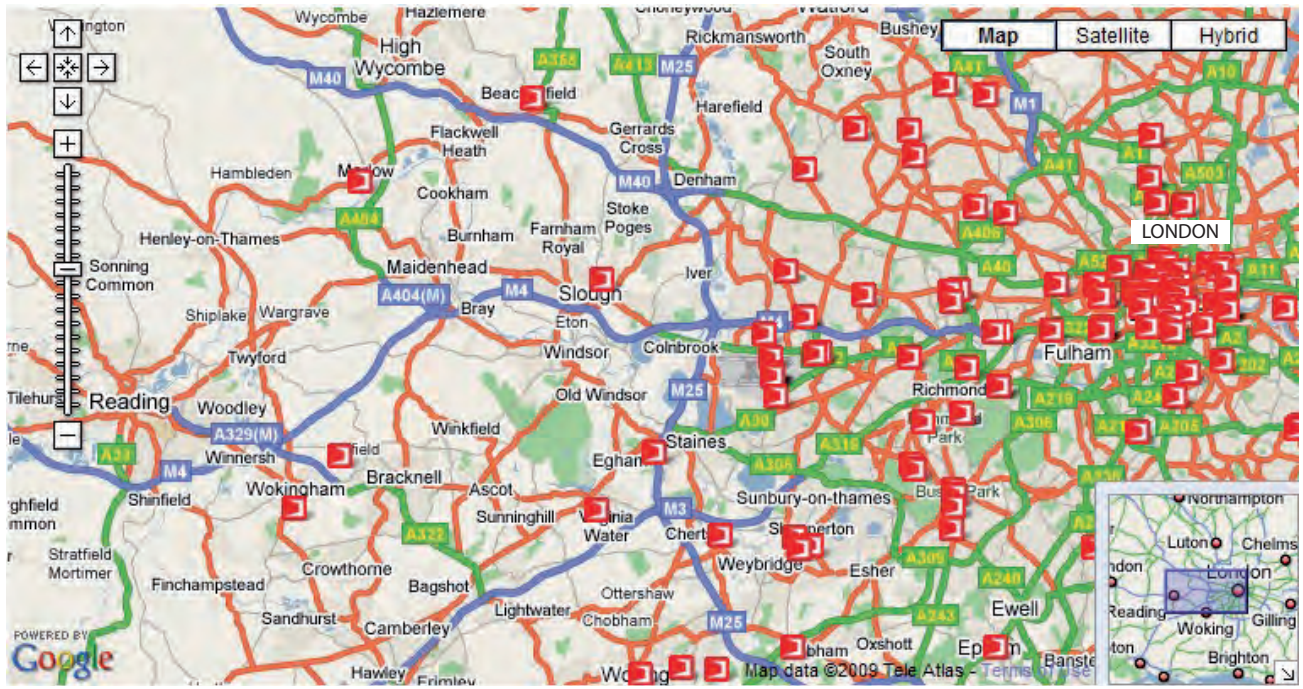


Alicante, Spain

A historic fishing village in south east Spain, now a fast growing tourist- city with a population of about 325,000 (2006)



Figure 3 Digital map of BT Openzone wi-fi (wireless internet) access points.



10 km

250 access points in total
BT wi-fi access point

(Source: BTopenzone)

Figure 4 Economic data for selected seaside towns in England, 2007

Seaside town	Male average hourly earnings (£)	People aged over 60 (%)	Working age benefit claimants (%)	New migrant workers (%)
Skegness	9.00	34.0	20.5	2.0
England average	11.80	24.2	11.2	3.8



Seaside town	Male average hourly earnings (£)	People aged over 60 (%)	Working age benefit claimants (%)	New migrant workers (%)
Blackpool	10.70	26.3	15.8	1.0
England average	11.80	24.2	11.2	3.8



Seaside town	Male average hourly earnings (£)	People aged over 60 (%)	Working age benefit claimants (%)	New migrant workers (%)
Lowestoft	9.50	26.0	15.9	4.0
England average	11.80	24.2	11.2	3.8

(Source: England's Seaside Towns: A 'benchmarking' study (2008))

BLANK PAGE

Every effort has been made to contact the copyright holders where possible. In some cases, every effort to contact copyright holders has been unsuccessful and Edexcel will be happy to rectify any omissions of acknowledgements at first opportunity.