

Edexcel GCE

Geography

Advanced Subsidiary

Unit 1: Global Challenges

RESOURCE BOOKLET

Friday 15 January 2010 – Morning

Paper Reference

6GE01/01

Do not return the Resource Booklet with the question paper.

Turn over ►

M35965A

©2010 Edexcel Limited.

1/1/1/1



edexcel 
advancing learning, changing lives

SECTION A

The following resources relate to Questions 1–6

Figure 1 Tracks and Intensity of all Tropical Cyclones since 1970

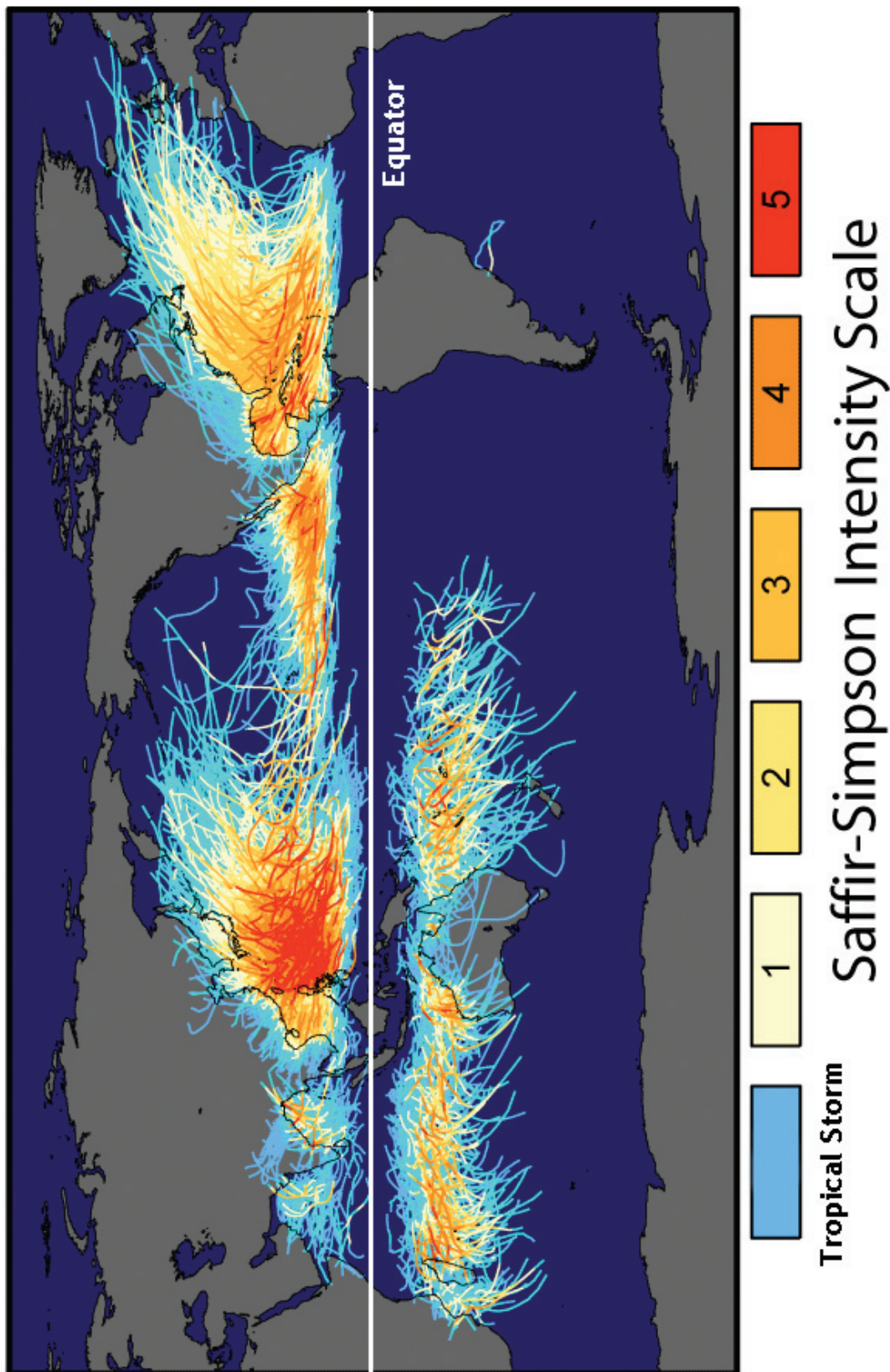


Figure 2 Changes in atmospheric carbon dioxide (CO₂) concentration over time

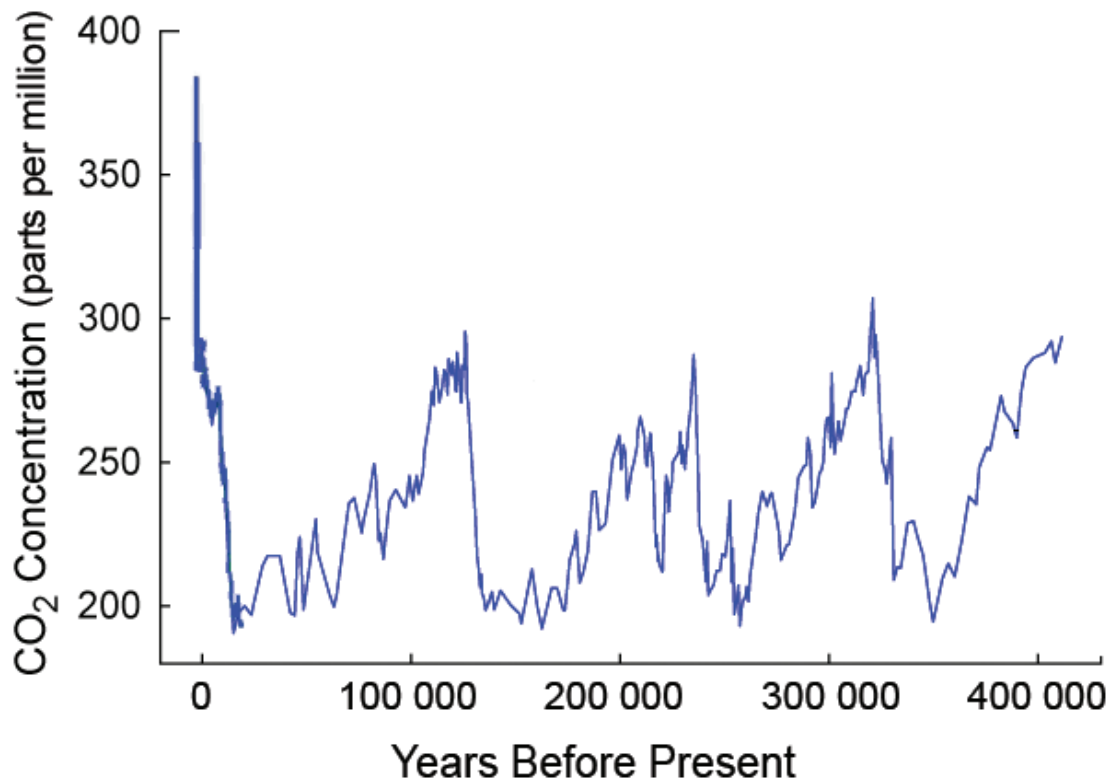
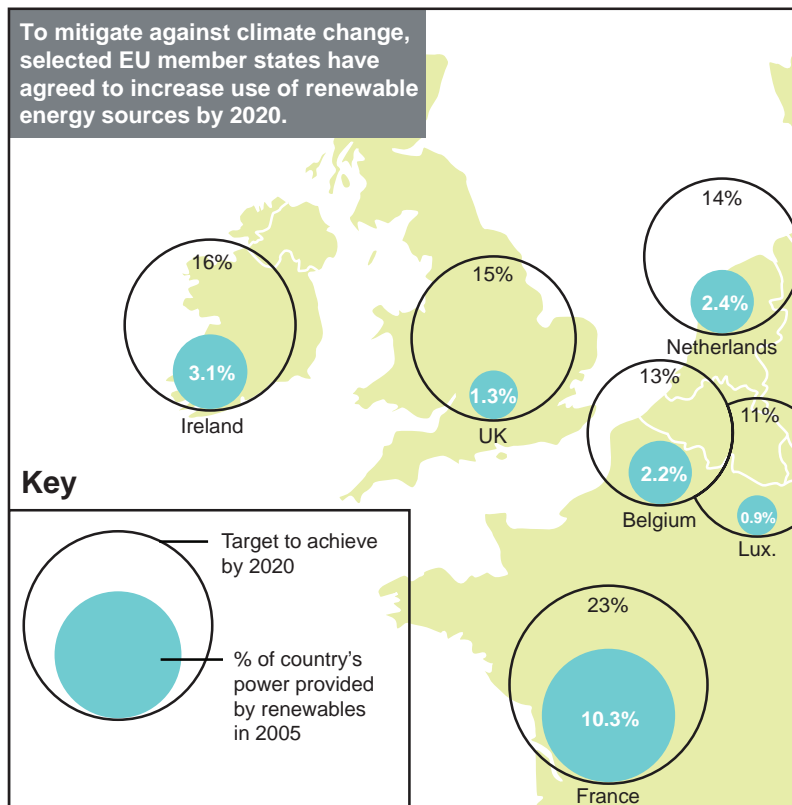


Figure 3 Climate change mitigation: renewable energy use and targets for selected EU member states

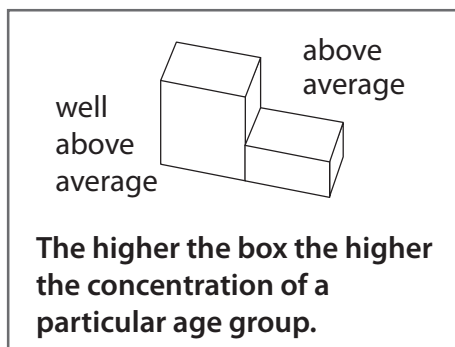


(Source: *The Guardian* newspaper)

Figure 4 Average incomes and income variations for six countries in 2008

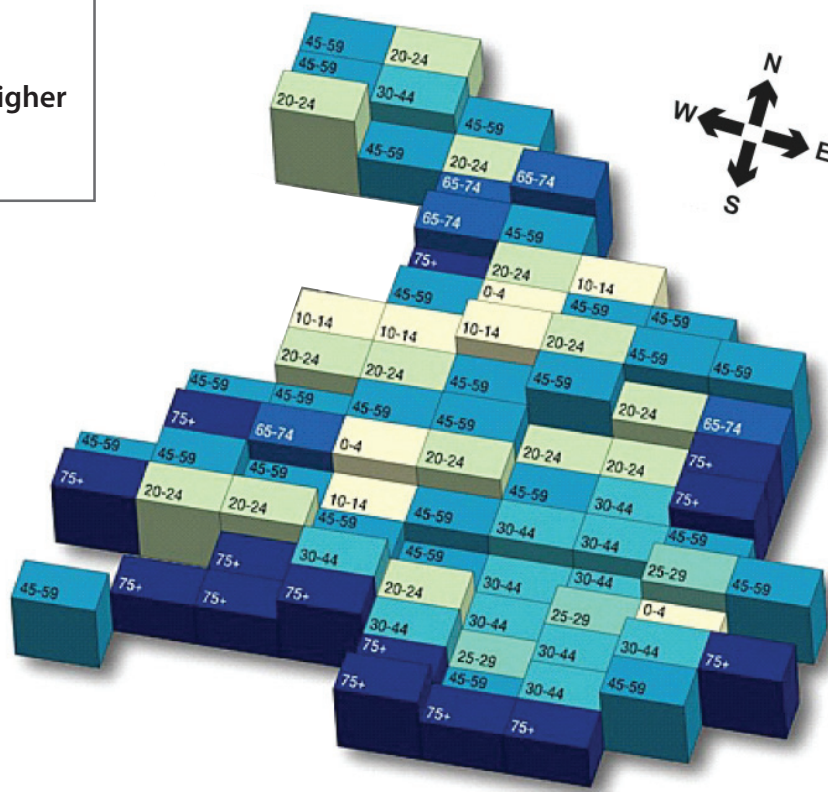
| | Average income per person (US dollars) | Share of national wealth for the poorest 20% of the people (%) | Share of national wealth for the richest 20% of the people (%) |
|--------------|--|--|--|
| USA | 42,000 | 5.4 | 45.8 |
| Singapore | 27,000 | 5.0 | 49.0 |
| South Africa | 5,100 | 3.5 | 62.2 |
| Philippines | 1,200 | 5.4 | 50.6 |
| Ethiopia | 150 | 9.1 | 39.4 |
| Nigeria | 750 | 5.0 | 49.2 |

Figure 5 A map of the UK, showing where unusually high numbers of different age groups are found



Key to age groups

- 0-19
- 20-24
- 25-29
- 30-44
- 45-59
- 60-74
- 75+



(Source: *Human Geography of the UK*, D. Dorling)

Figure 6 Two contrasting megacities

A



(Source: Pius Utomi Ekpei/Getty Images)

B



(Source: www.stills.org)

SECTION B

The following resources relate to Questions 7–10

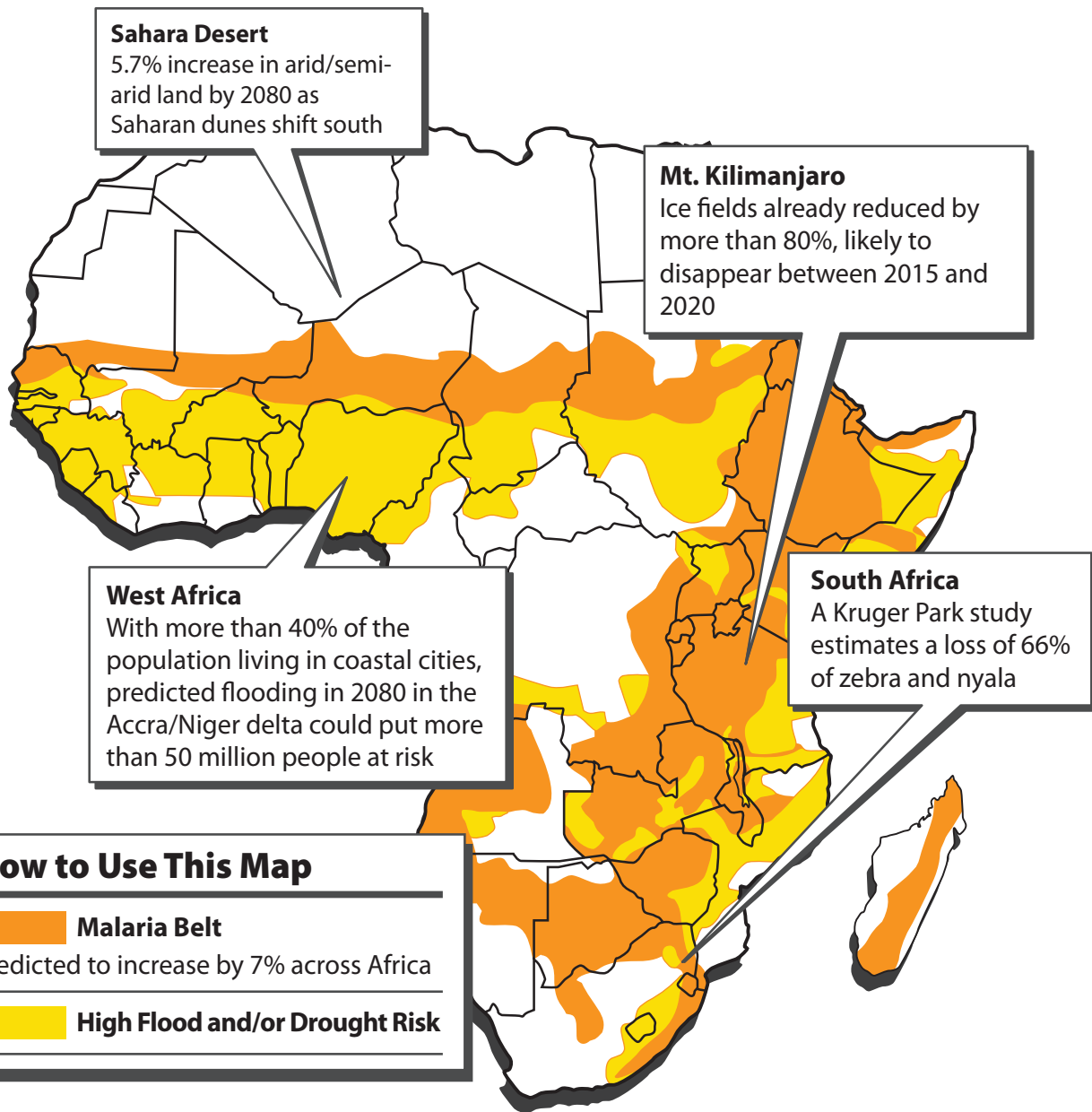
Figure 7 Possible causes of natural disasters for some megacities

| Megacity | Country | Resident population at risk (millions) | | Possible causes of natural disasters | | | | |
|-------------|-------------|--|-------------------|--------------------------------------|-------------------|----------------|--------------|--------|
| | | As at 2003 | Forecast for 2015 | Earthquake | Volcanic eruption | Tropical storm | Winter storm | Flood |
| Tokyo | Japan | 35.0 | 36.2 | High | Low | Medium | Low | Low |
| New York | USA | 21.2 | 22.8 | Low | None | Medium | Medium | Low |
| Mumbai | India | 17.4 | 22.6 | Medium | None | Low | None | Medium |
| Los Angeles | USA | 16.4 | 17.6 | High | None | None | Low | Medium |
| Manila | Philippines | 13.9 | 16.8 | High | Medium | High | None | Medium |
| Calcutta | India | 13.8 | 16.8 | Medium | None | High | None | High |
| Osaka, Kobe | Japan | 13.0 | 13.2 | High | None | Medium | None | Medium |
| Shanghai | China | 12.8 | 12.7 | Low | None | Medium | None | Medium |
| Dhaka | Bangladesh | 11.6 | 17.9 | High | None | High | None | High |

Level of risk:  None  Low  Medium  High

(Source: Munich Re)

Figure 8 21st Century projections for climate change in Africa



The 21st Century

RAINFALL

☁️ ▼ **40%**

TEMPERATURE

🌡️ ▲ **4°C**

EXTREME EVENTS

🌀 ▲ **20%**

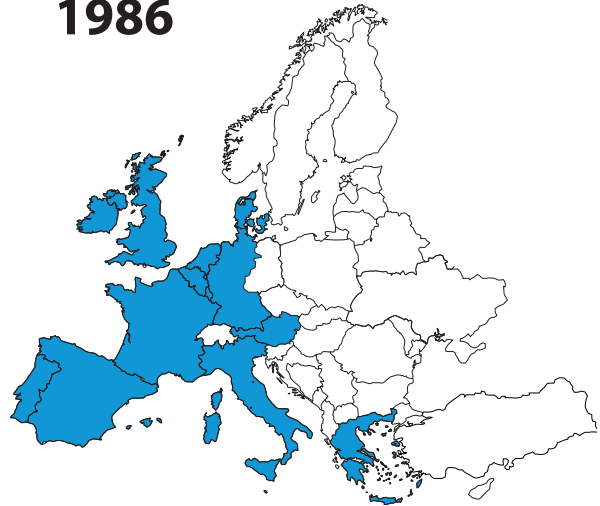
Figure 9 Growth of the European Union trade bloc

| | |
|-------|---|
| 1950s | <ul style="list-style-type: none"> 1957 Treaty of Rome creates the European Economic Community (EEC) |
| 1970s | <ul style="list-style-type: none"> Denmark, Ireland and the United Kingdom join the EEC |
| 1990s | <ul style="list-style-type: none"> The European Union (EU) established on 1 January 1993 |
| 2000s | <ul style="list-style-type: none"> The Euro becomes the currency of many EU countries |

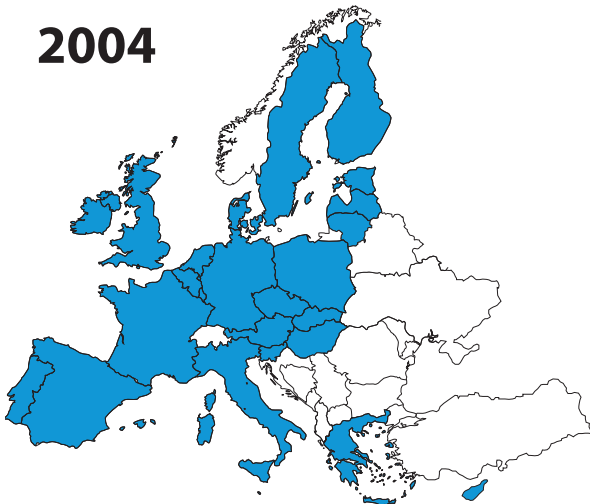
1952



1986



2004



2007



Figure 10 A British newspaper report on global migration into the UK

UK needs surgeons, dentists, chefs and ballet dancers

Government ministers have unveiled a **proposed** official list of the types of foreign workers we need – and those we are rejecting.

| MIGRANTS THE UK NEEDS | ...AND ONES WE DON'T WANT! |
|------------------------------|------------------------------|
| Ballet dancers | Midwives |
| Work riders (horse trainers) | GPs |
| Sheep shearers | Social workers |
| Skilled chefs | Computer engineers |
| Plastic surgeons | Skilled construction workers |
| Hovercraft officers | Architects |
| Frozen fish filleters | Beauty salon managers |
| Kids' dentists | Musicians |
| Maths & science teachers | Photographers |
| Care home workers | Chinese masseurs |

(Source: loosely based on *The Sun* newspaper, 09 September 2008)

BLANK PAGE

Every effort has been made to contact the copyright holders where possible. In some cases, every effort to contact copyright holders has been unsuccessful and Edexcel will be happy to rectify any omissions of acknowledgements at first opportunity.