

Edexcel GCE

Geography

**Advanced Subsidiary
Unit 1: Global Challenges**

RESOURCE BOOKLET

Monday 14 January 2013 – Afternoon

Paper Reference

6GE01/01

Do not return the Resource Booklet with the question paper.

Turn over ►

P41354A

©2013 Pearson Education Ltd.

1/1/1/1



PEARSON

SECTION A

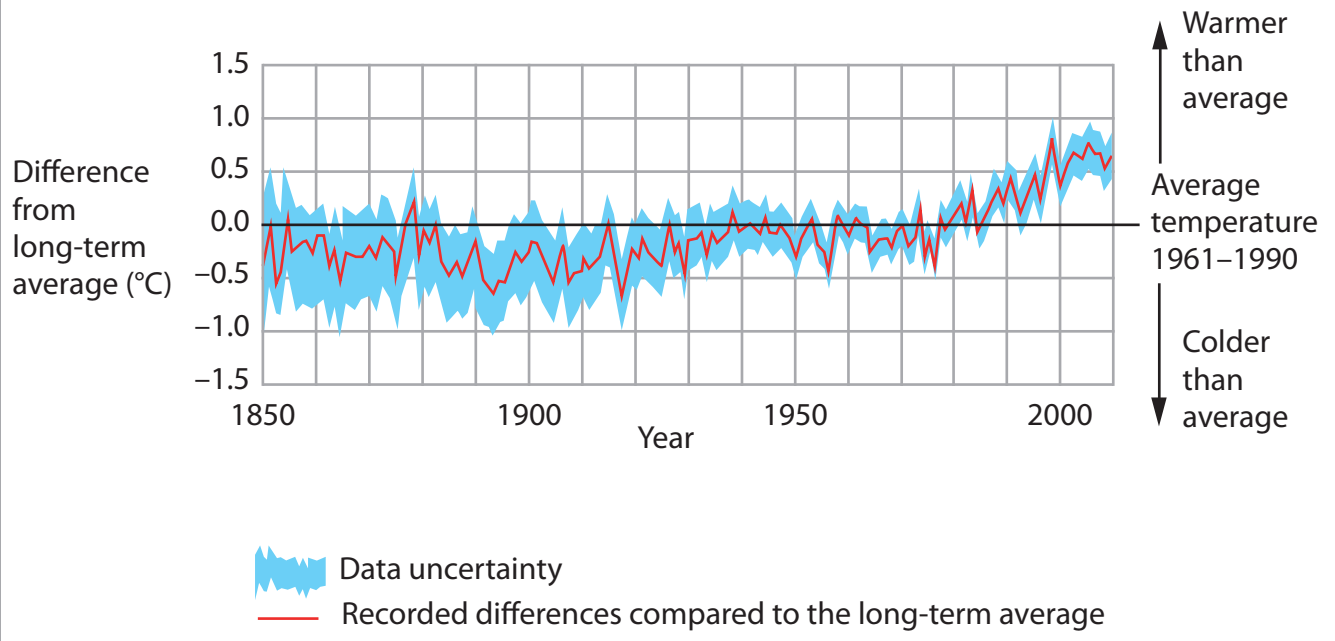
The following resources relate to Questions 1–6.

Figure 1 The top ten insurance 'catastrophe losses' 1990 to 2010

Insurance cost (\$ billion)	Year	Insurance loss due to:	Regions affected
8	1991	Typhoon Mireille	Japan
9	2004	Hurricane Charley	USA & Caribbean
9	2005	Hurricane Rita	USA & Caribbean
11	2005	Hurricane Wilma	USA & Caribbean
14	2004	Hurricane Ivan (including damage to oil rigs)	USA & Caribbean
15	2008	Hurricane Ike	USA & Caribbean
20	1994	Northridge earthquake	USA
23	2001	Terrorist attack on World Trade Center	USA
25	1992	Hurricane Andrew	USA & Caribbean
72	2005	Hurricane Katrina	USA & Caribbean

© Swiss Re

Figure 2 Global temperature variations, 1850 – 2010

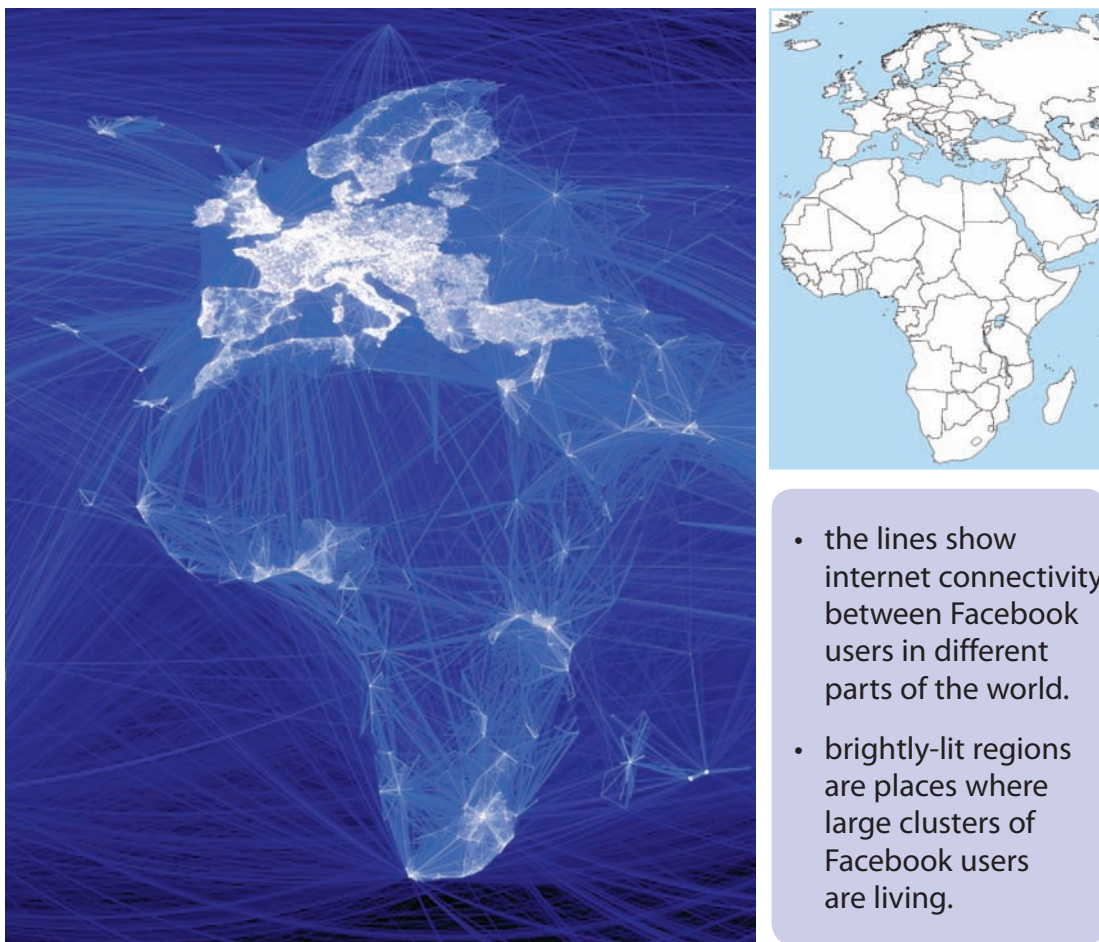


© Crown Copyright

Figure 3 The results of a survey showing the views held by UK citizens about government strategies to tackle climate change

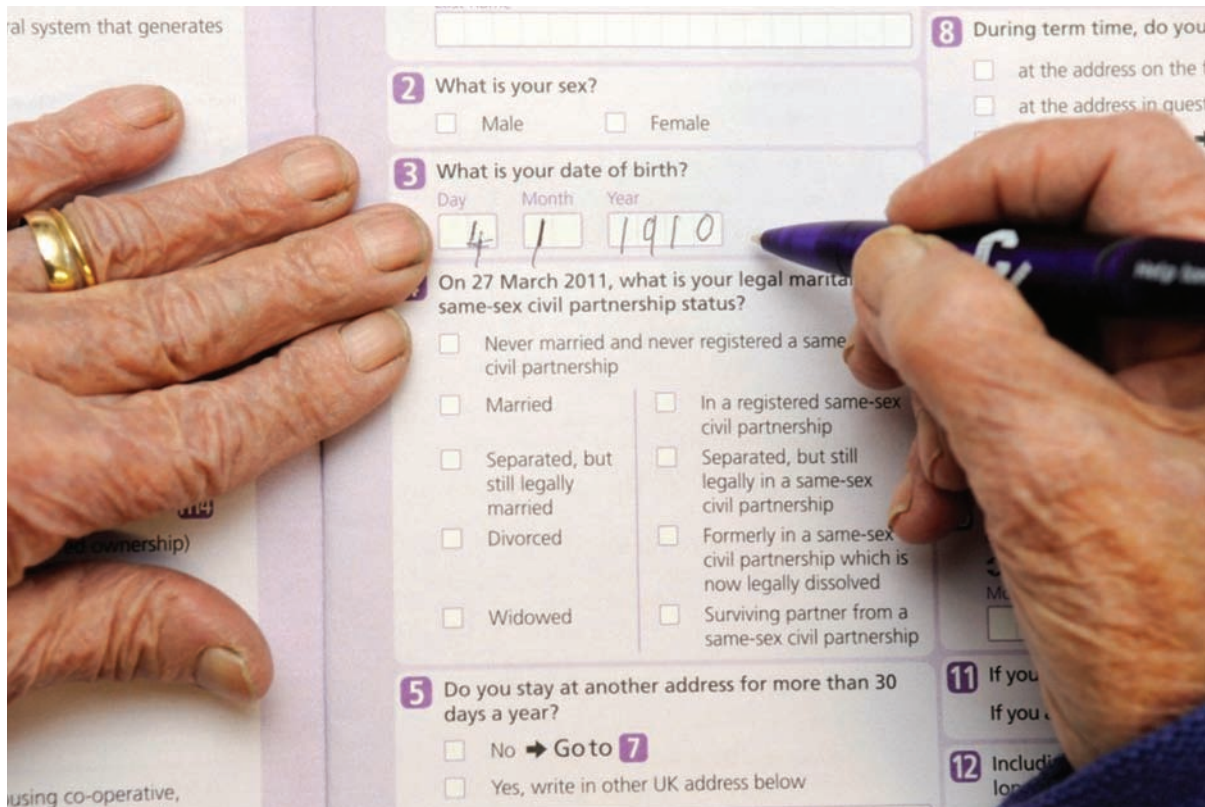
Government strategy	Percentage of people who believe that the UK government is doing:		
	too much	too little	about right
Developing renewable energy sources	7	23	70
Afforestation schemes	14	12	74
Increasing taxes on fossil fuels	15	4	81
Carbon trading schemes	5	5	90
Participating in international agreements	13	9	78
Water conservation schemes	6	9	85
Encouraging farmers to grow new crop types	7	8	85

Figure 4 A representation of Facebook connectivity in Europe, Africa and the Middle East in 2011



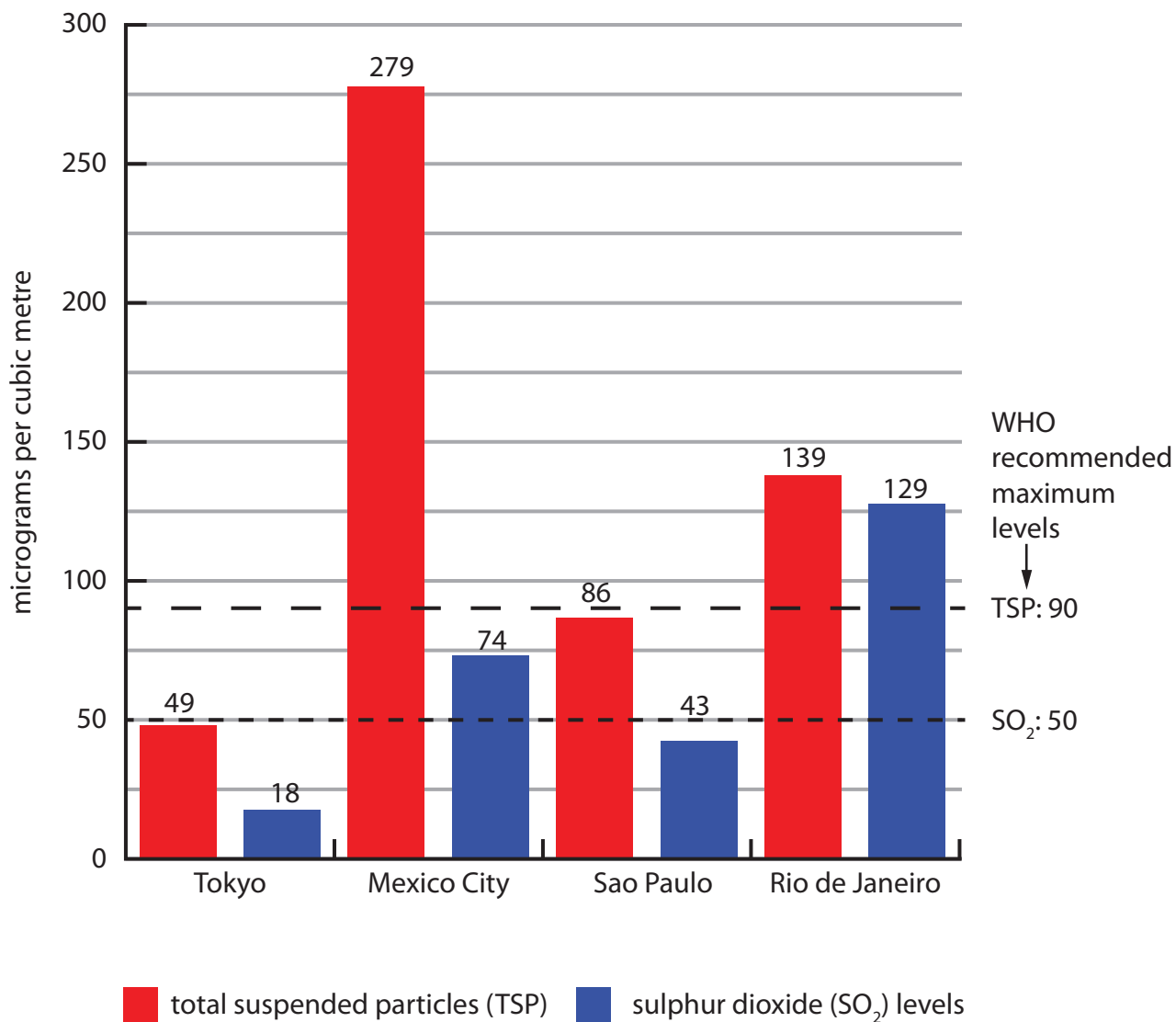
© Paul Butler, Facebook's data infrastructure engineering team

Figure 5 Elsie Stevens (date of birth 4th January 1910) fills in her 2011 UK national census return



© Crown Copyright

Figure 6 Air pollution in selected megacities in relation to World Health Organization (WHO) recommended maximum levels



© UN-HABITAT

Figure 7 Changes in the atmospheric and oceanic circulations in the Pacific region during an El Niño year

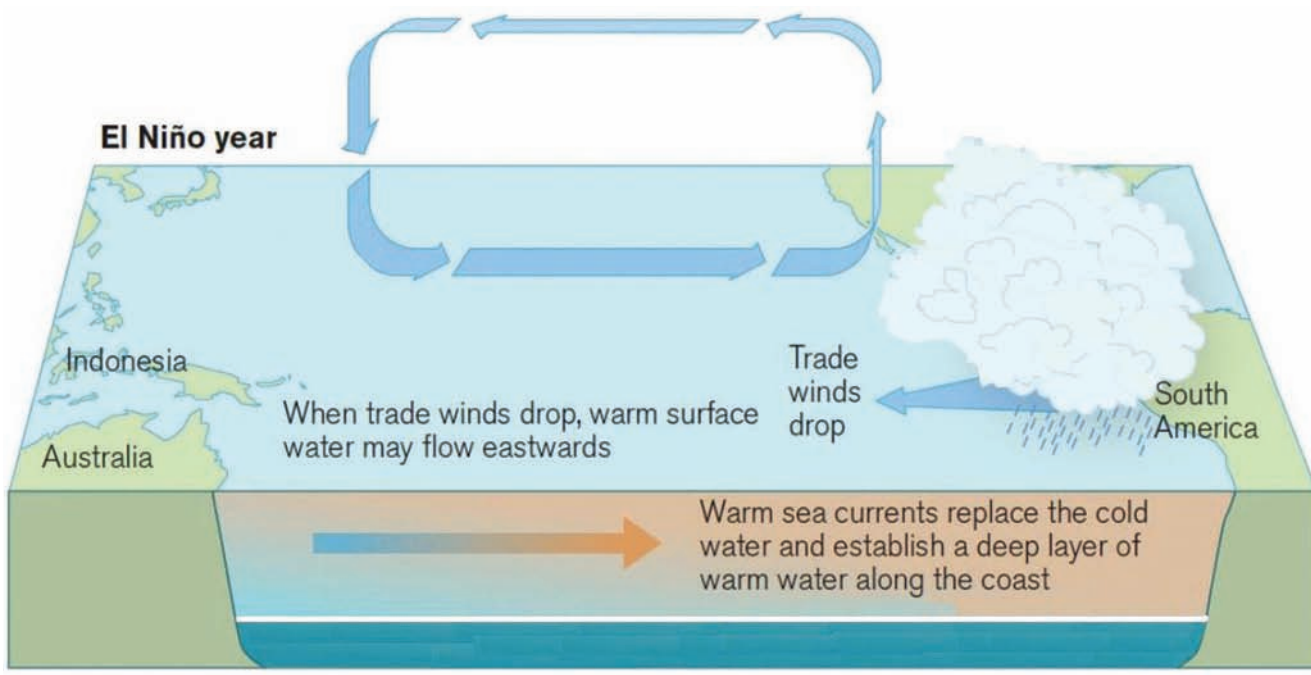
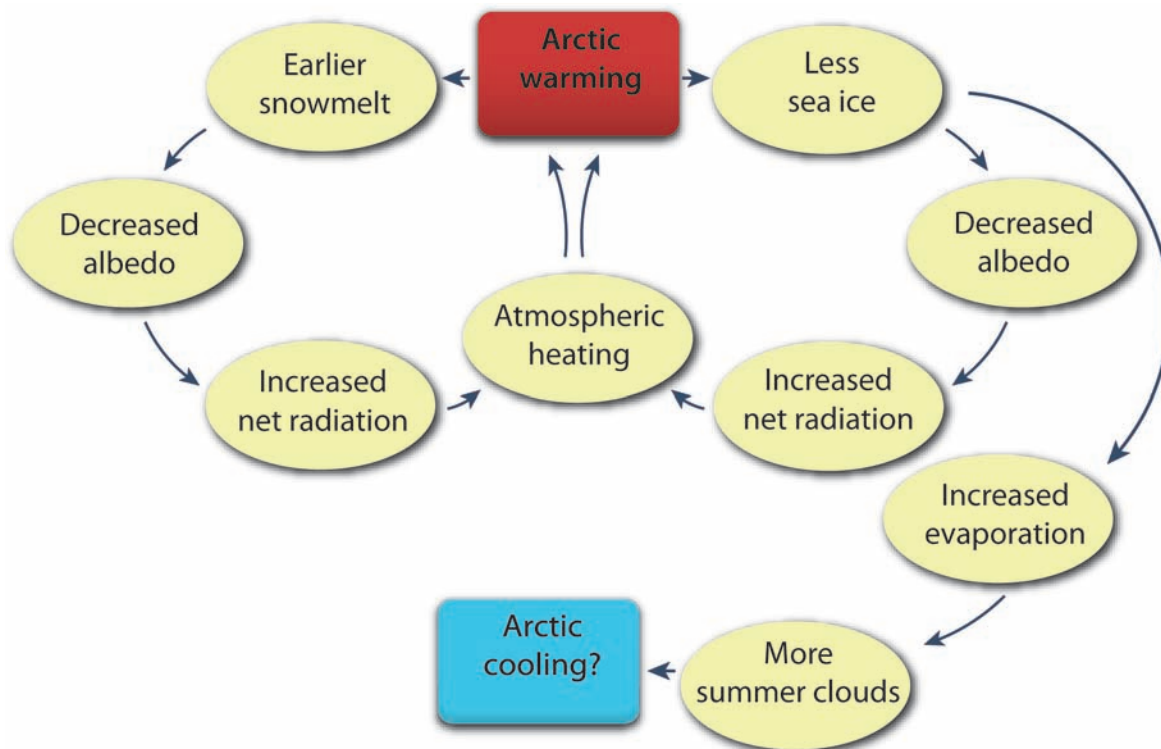


Figure 8 Feedback changes associated with atmospheric heating



© Hugo Ahlenius, UNEP/GRID-Arendal

Figure 9 Some benefits and costs of the USA's membership of the NAFTA trade bloc



The North American Free Trade Agreement, or NAFTA, is a **trade bloc** with three member states: Canada, Mexico and the USA. Since this **global grouping** was created in 1994:

- **tariffs** have been eliminated on most trade exchanges between members
- many US firms have **relocated** their operations to Mexico, where labour costs are cheaper
- cheaper goods for American consumers

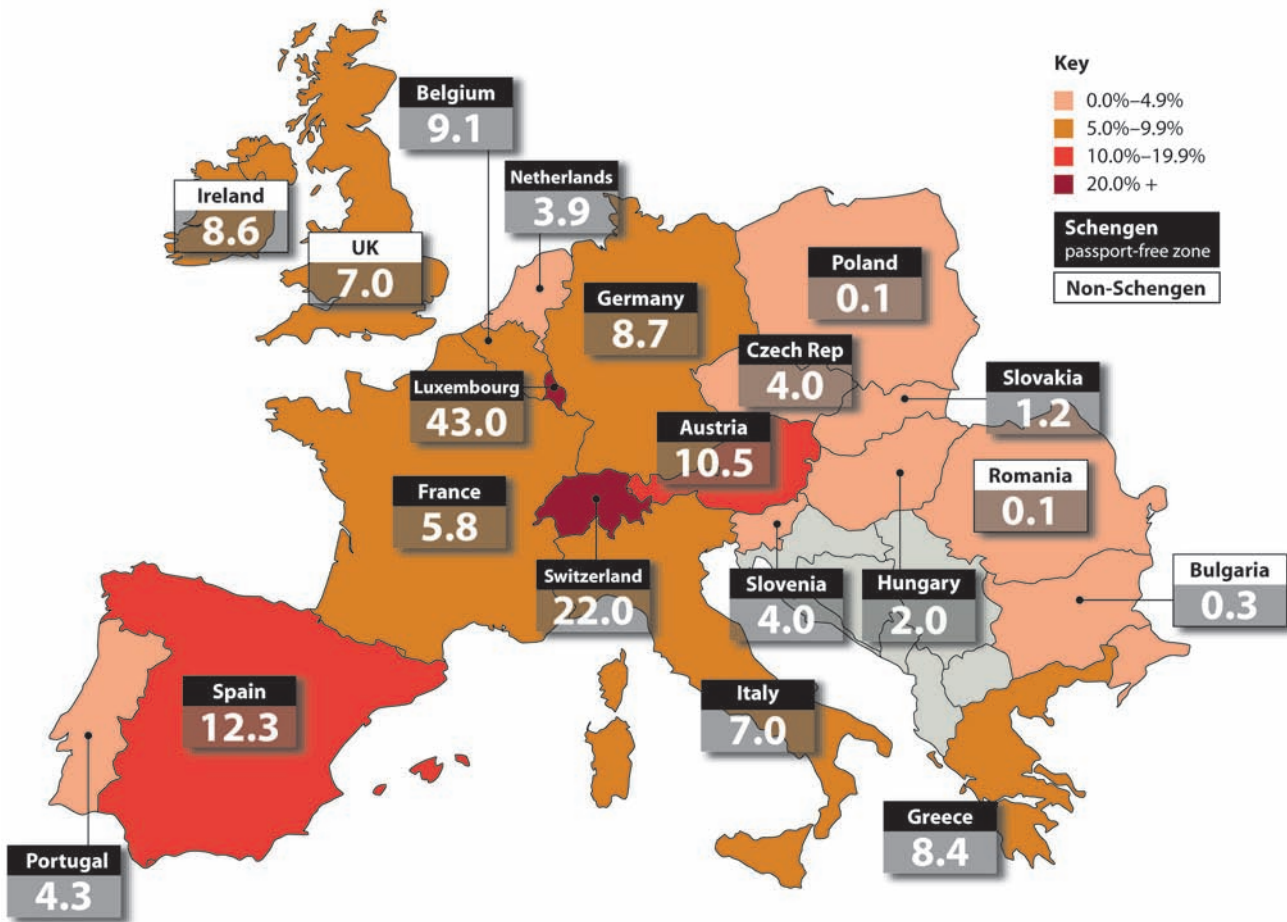


© Keith Tucker, Cartoon Stock

Figure 10 Foreign citizens as a percentage of the total resident population for some EU and European states

Foreign citizens as a percentage of the total population, 2010

Total number of foreigners, including citizens of other EU member states and non-EU citizens, usually resident in the reporting country.



© The Financial Times

Edexcel a product of Pearson Education Ltd. gratefully acknowledges the following sources:

The Most Costly World Insurance Losses, Swiss Re, 2007

Quantifying uncertainties in global and regional temperature change, Colin Morice – John Kennedy – Nick Rayner – Phil Jones, Met Office, 2012

Visualizing Friendships, Paul Butler, Facebook's data infrastructure engineering team, 2010

Press photographs, UK Statistics Authority, 2011

State of the World's Cities 2008/2009 - Harmonious Cities, UN-HABITAT, 2008

Climate feedbacks, Hugo Ahlenius, UNEP GRID-Arendal, 2007

We Want Our Jobs Back, Keith Tucker, Cartoon Stock

The Financial Times LTD, 2011

Every effort has been made to contact copyright holders to obtain their permission for the use of copyright material. Edexcel, a product of Pearson Education Ltd. will, if notified, be happy to rectify any errors or omissions and include any such rectifications in future editions.