



UNIVERSITY OF CAMBRIDGE INTERNATIONAL EXAMINATIONS
General Certificate of Education
Advanced Subsidiary Level and Advanced Level

CANDIDATE
NAME

CENTRE
NUMBER

--	--	--	--	--

CANDIDATE
NUMBER

--	--	--	--



BIOLOGY

9700/21

Paper 2 Structured Questions AS

May/June 2012

1 hour 15 minutes

Candidates answer on the Question Paper.

No Additional Materials are required.

READ THESE INSTRUCTIONS FIRST

Write your Centre number, candidate number and name in the spaces provided at the top of the page.

Write in dark blue or black ink.

You may use a soft pencil for any diagrams, graphs or rough working.

Do not use red ink, staples, paper clips, highlighters, glue or correction fluid.

DO NOT WRITE IN ANY BARCODES.

Answer **all** questions.

At the end of the examination, fasten all your work securely together.

The number of marks is given in brackets [] at the end of each question or part question.

For Examiner's Use	
1	
2	
3	
4	
5	
6	
Total	

This document consists of **15** printed pages and **5** blank pages.



BLANK PAGE

3

1 Name as precisely as you can the structure described in each of the following statements.

For
Examiner's
Use

(a) The blood vessel that transports deoxygenated blood from the heart.

..... [1]

(b) The cell that ingests and digests cell debris and bacteria in the lungs.

..... [1]

(c) The cell that secretes antibodies.

..... [1]

(d) The epithelial cell that secretes mucus in the trachea.

..... [1]

(e) The tissue that prevents the collapse of the trachea during inhalation.

..... [1]

[Total: 5]

3 Haemoglobinopathies are inherited conditions linked to the structure and function of haemoglobin. Sickle cell anaemia is one of these conditions in which the transport and delivery of oxygen to tissues is less than normal.

An investigation was carried out to discover the effect of sickle cell anaemia on the ability of blood to carry oxygen. Blood samples were taken from two people:

- person **L** without sickle cell anaemia
- person **M** with sickle cell anaemia.

The percentage saturation of haemoglobin with oxygen was determined over a range of partial pressures of oxygen.

Fig. 3.1 shows oxygen haemoglobin dissociation curves for the two blood samples.

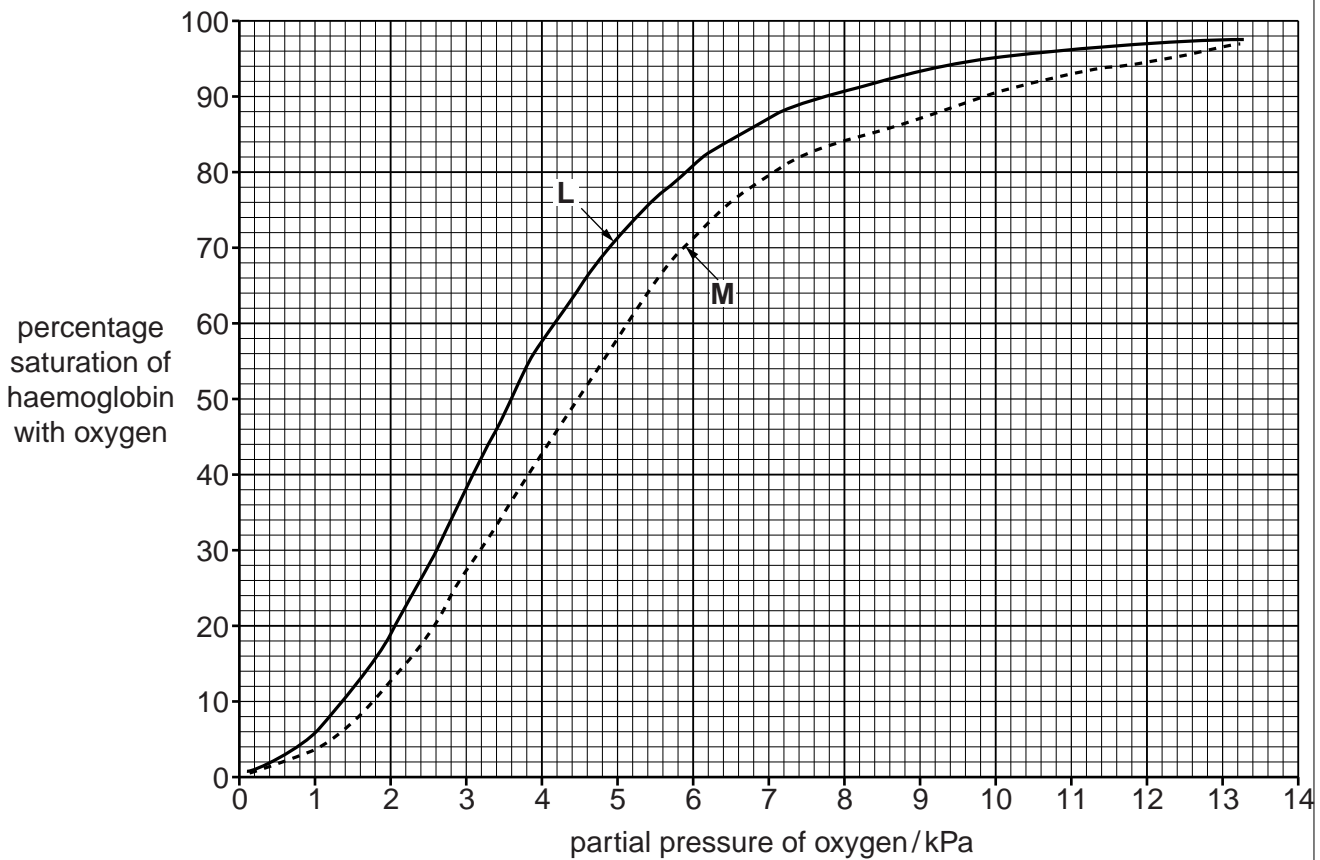


Fig. 3.1

(a) P50 is the partial pressure of oxygen at which haemoglobin is 50% saturated with oxygen. It is taken as a measurement of the affinity of haemoglobin for oxygen.

(i) State the P50 for the two blood samples, **L** and **M**.

L

M [1]

(ii) With reference to Fig. 3.1, describe how the dissociation curve for person **M** differs from the dissociation curve for person **L**.

For
Examiner's
Use

.....
.....
.....
.....
.....
..... [3]

(b) Explain the advantage of the position of the dissociation curve for people with sickle cell anaemia.

.....
.....
.....
.....
.....
..... [3]

(c) The partial pressure of oxygen in the lungs at sea level is about 13.5 kPa. At an altitude of 3000 metres the partial pressure of oxygen in the lungs is about 7.5 kPa.

When people move from sea level to high altitude they become adapted to the low partial pressure of oxygen.

Describe **and** explain how humans become adapted to the low partial pressure of oxygen at high altitude.

.....
.....
.....
.....
.....
.....
.....
.....
.....
.....
..... [4]

(d) Vaccination is used to control the spread of diseases, such as measles.

Explain why vaccination cannot be used to prevent sickle cell anaemia.

For
Examiner's
Use

.....

.....

.....

..... [2]

[Total: 13]

BLANK PAGE

Question 4 starts on page 10

(b) With reference to Fig. 4.1, identify the aspects of protein structure that are shown and those that are **not** shown.

For
Examiner's
Use

aspects of protein structure shown

.....
.....
.....
.....

aspects of protein structure not shown

.....
.....
.....
.....

[3]

Fig. 4.2 shows the changes in energy during the progress of an uncatalysed reaction.

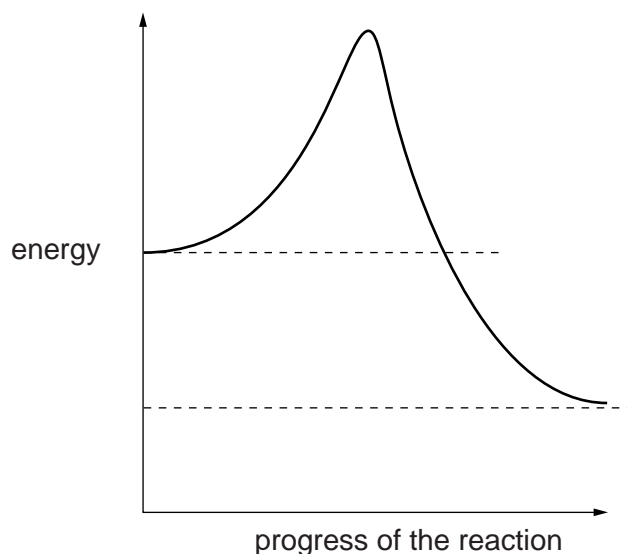


Fig. 4.2

(c) (i) Draw on Fig. 4.2 a curve to show changes in energy during the progress of the same reaction when catalysed by an enzyme. [2]

(ii) State the term given to the energy level that must be overcome before a reaction can progress.

..... [1]

(d) Antibiotic resistance is a serious worldwide problem.

For
Examiner's
Use

Suggest how antibiotics can be used effectively to avoid the development of widespread resistance in bacteria.

.....

.....

.....

..... [2]

[Total: 11]

BLANK PAGE

Question 5 starts on page 14

5 The slime mould, *Dictyostelium discoideum*, is a eukaryote and a decomposer of protein-rich material.

For
Examiner's
Use

Fig. 5.1 shows the life cycle of *D. discoideum*.

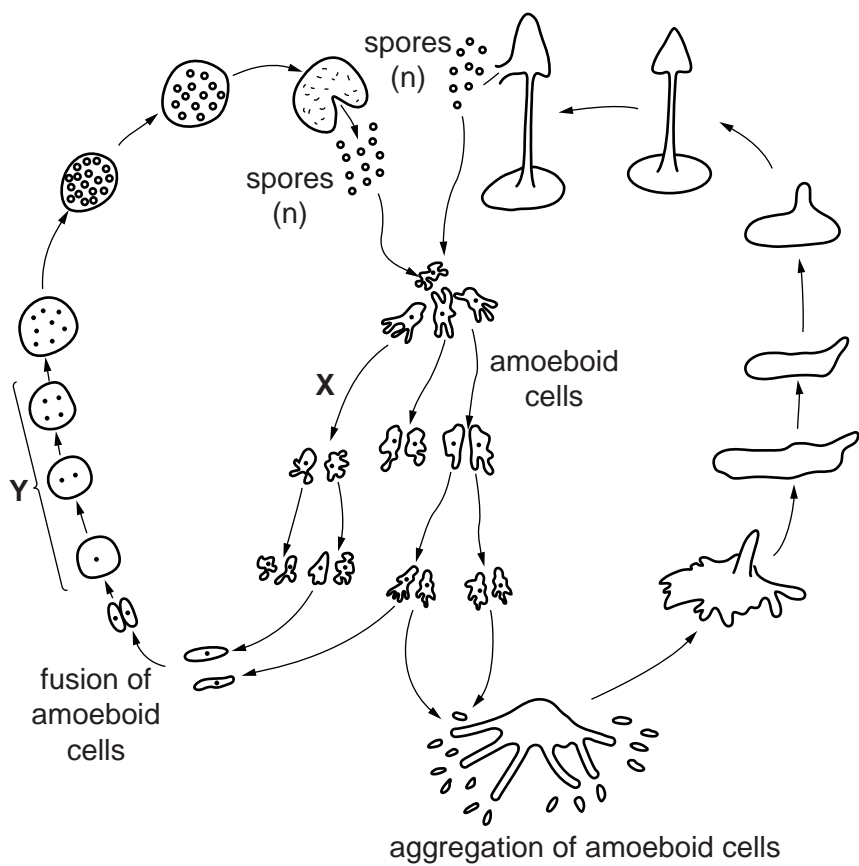


Fig. 5.1

(a) State the type of nuclear division that occurs at X and at Y.

X

Y [1]

(b) State what is meant by the term *reduction division* and explain why this division is necessary in a life cycle, such as that shown in Fig. 5.1.

.....

 [2]

- (c) The amoeboid cells of *D. discoideum* feed on protein-rich material and break it down to form ammonium ions (NH_4^+). The cell membranes of *D. discoideum* have transporter proteins that are responsible for the excretion of ammonium ions.

For
Examiner's
Use

Describe what happens to the ammonium ions excreted by *D. discoideum* into the soil.

.....
.....
.....
.....
.....
..... [3]

- (d) Suggest why a transporter protein is required for the removal of ammonium ions from *D. discoideum*.

.....
.....
.....
..... [2]

[Total: 8]

6 Fig. 6.1 shows part of a DNA molecule.

For
Examiner's
Use

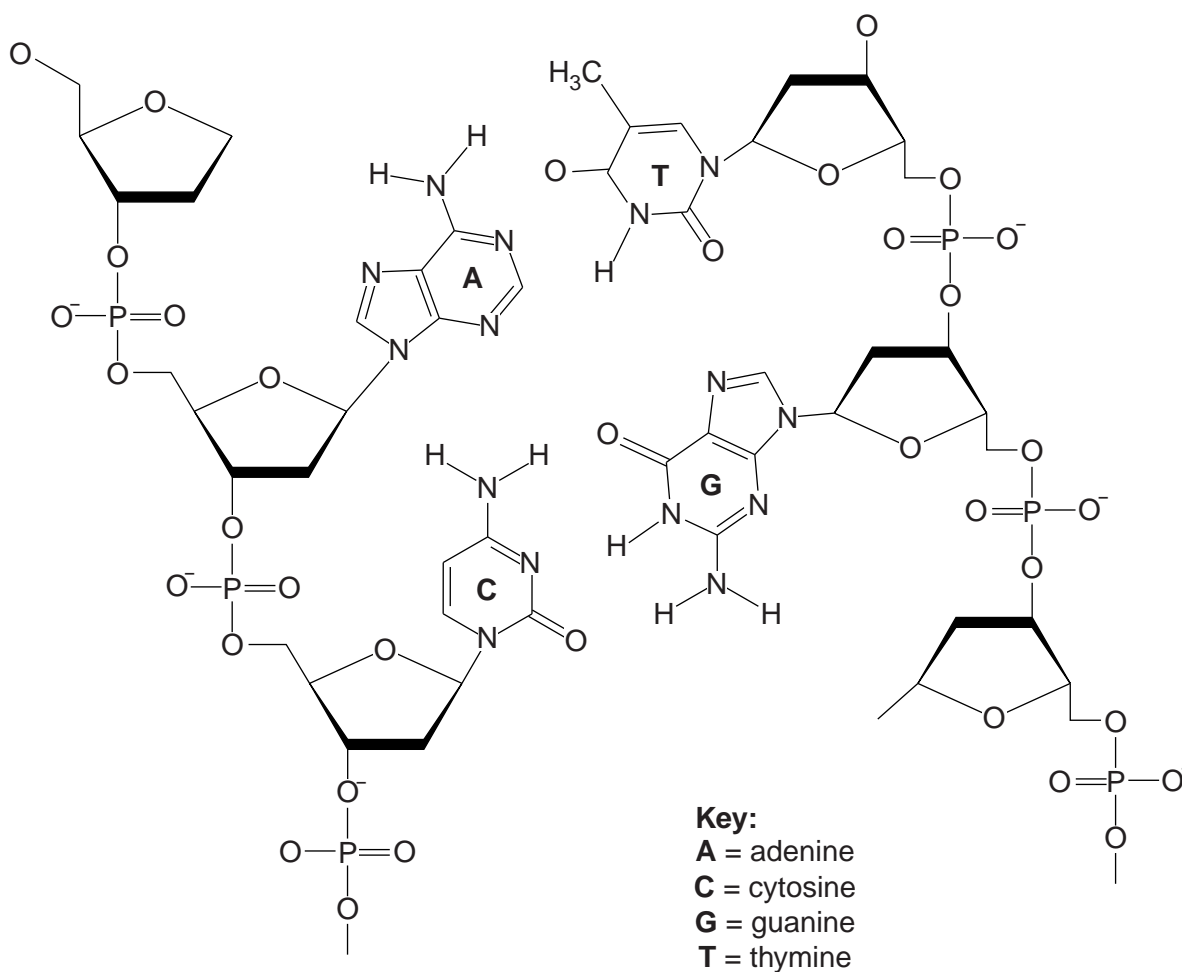


Fig. 6.1

(a) (i) Complete Fig. 6.1 by drawing on the hydrogen bonds between the two base pairs shown. [2]

(ii) State the importance of hydrogen bonding in DNA structure.

.....

.....

.....

.....

.....

..... [2]

(c) Table 6.2 shows Chargaff's data for a virus.

Table 6.2

For
Examiner's
Use

organism	percentage of adenine	percentage of thymine	percentage of guanine	percentage of cytosine
a virus	24.0	31.2	23.3	21.5

- (i) State how the result for the virus differs from the results for all the organisms given in Table 6.1.

.....

 [1]

- (ii) Suggest why the results for the virus are different from all the other organisms.

.....
 [1]

[Total: 9]

BLANK PAGE

BLANK PAGE

Permission to reproduce items where third-party owned material protected by copyright is included has been sought and cleared where possible. Every reasonable effort has been made by the publisher (UCLES) to trace copyright holders, but if any items requiring clearance have unwittingly been included, the publisher will be pleased to make amends at the earliest possible opportunity.

University of Cambridge International Examinations is part of the Cambridge Assessment Group. Cambridge Assessment is the brand name of University of Cambridge Local Examinations Syndicate (UCLES), which is itself a department of the University of Cambridge.