

Cambridge
International
AS & A Level

Cambridge International Examinations
Cambridge International Advanced Subsidiary and Advanced Level

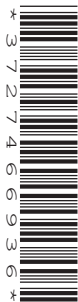
CANDIDATE
NAME

CENTRE
NUMBER

--	--	--	--	--	--

CANDIDATE
NUMBER

--	--	--	--	--



BIOLOGY

9700/42

Paper 4 A Level Structured Questions

May/June 2016

2 hours

Candidates answer on the Question Paper.

No Additional Materials are required.

READ THESE INSTRUCTIONS FIRST

Write your Centre number, candidate number and name on all the work you hand in.

Write in dark blue or black pen.

You may use an HB pencil for any diagrams or graphs.

Do not use staples, paper clips, glue or correction fluid.

DO NOT WRITE IN ANY BARCODES.

Section A

Answer **all** questions.

Section B

Answer **one** question.

Electronic calculators may be used.

You may lose marks if you do not show your working or if you do not use appropriate units.

At the end of the examination, fasten all your work securely together.

The number of marks is given in brackets [] at the end of each question or part question.

This document consists of **22** printed pages and **2** lined pages.

Section A

Answer **all** the questions.

- 1 (a) ATP and coenzyme A both play important roles in respiration.

Fig. 1.1 represents the molecular structure of coenzyme A.

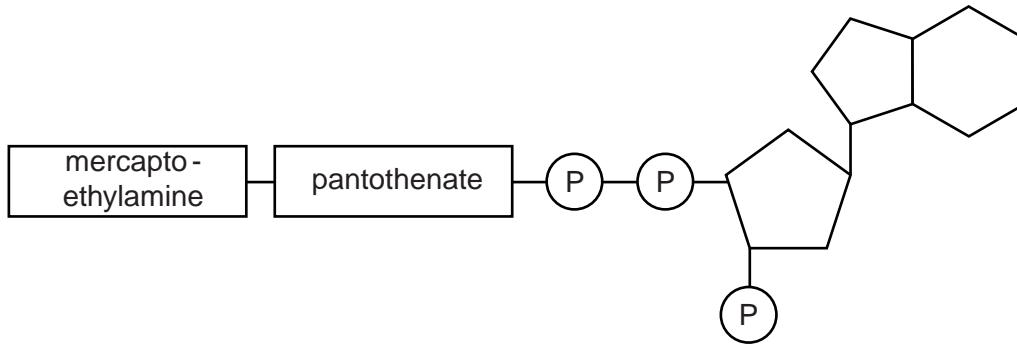


Fig. 1.1

- (i) With reference to Fig. 1.1, state two structural **similarities** between coenzyme A and ATP.

1

2 [2]

- (ii) Describe the role of coenzyme A in respiration.

.....

.....

.....

.....

.....

.....

.....

.....

..... [3]

(b) Fig. 1.2 summarises the reactions that take place after glucose has entered a certain type of cell.

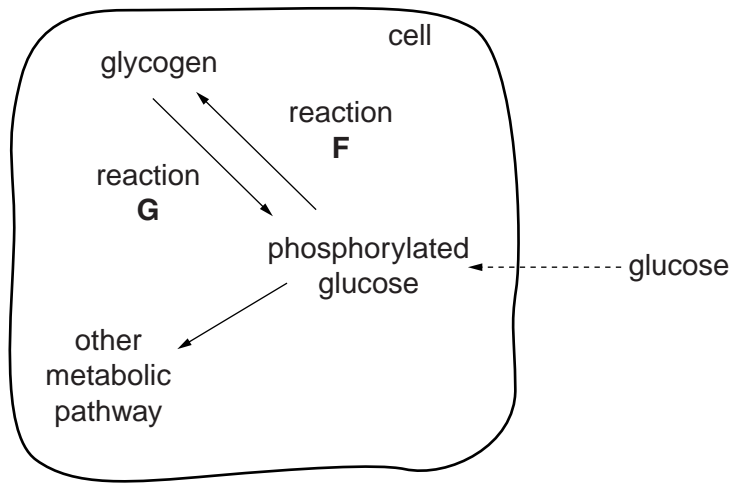


Fig. 1.2

(i) Suggest **one** type of cell in which the reactions shown in Fig. 1.2 could occur.

..... [1]

(ii) State the mechanism by which glucose enters the cell.

..... [1]

(iii) Name the type of reaction occurring at **F** and the type of reaction occurring at **G**.

F

G [2]

(iv) With reference to Fig. 1.2, suggest **one** example of an 'other metabolic pathway' for phosphorylated glucose.

..... [1]

[Total: 10]

(b) Fig. 2.2 shows an absorption spectrum for chloroplast pigments and a photosynthetic action spectrum for the same plant.

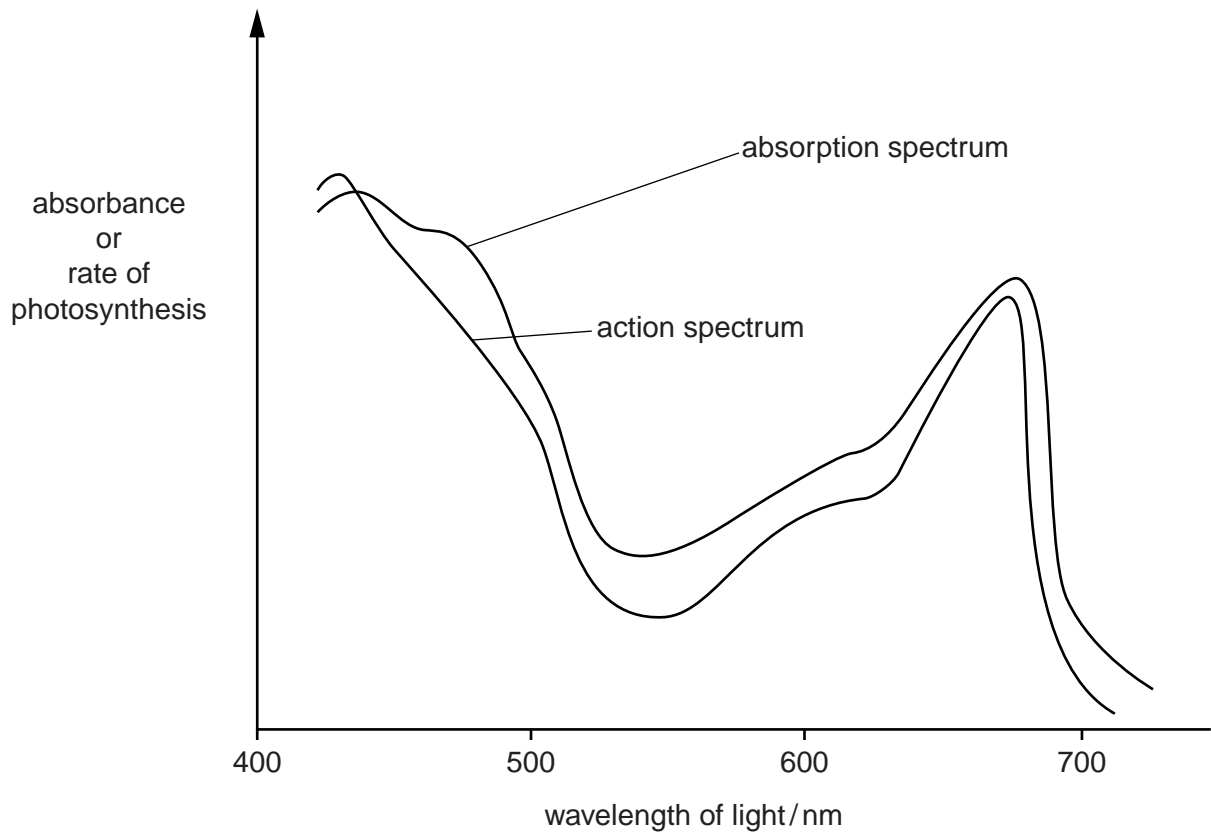


Fig. 2.2

(i) Distinguish between an absorption spectrum and an action spectrum.

absorption spectrum

.....

.....

action spectrum

.....

..... [2]

(ii) Explain why the two curves shown in Fig. 2.2 have similar shapes.

.....

.....

.....

.....

..... [2]

(c) Describe the role in photosynthesis of an accessory pigment, such as carotene.

.....

.....

.....

.....

..... [2]

[Total: 10]

- (c) The researchers found that I-Ppol destroyed the X chromosome during meiosis in the GM male mosquitoes. This prevented these males from producing sperm containing an X chromosome.

However, I-Ppol was still active in zygotes produced by the fusion of female gametes with sperm containing a Y chromosome.

Explain why this meant that the GM males produced no offspring at all.

.....

.....

.....

.....

..... [2]

- (d) The researchers modified the gene for I-Ppol, so that it produced a version of I-Ppol that was active **only** during meiosis in the males, and was **not** active in the zygote. They then tested the effect of introducing these GM males into a mosquito population.

- Several cages were set up. 50 adult male mosquitoes and 50 adult female mosquitoes without the I-Ppol gene were placed in each cage.
- 150 adult GM males were introduced into each cage. In half of the cages (**A**), these GM males had the normal gene for I-Ppol. In the rest of the cages (**B**), the GM males had the modified gene for I-Ppol.
- The mean number of adult female offspring per cage was determined over the next six generations.

Fig. 3.1 shows the results.

- (ii) Suggest possible difficulties that might arise if the technique of releasing GM male mosquitoes with the modified I-Ppol gene were used to try to control populations of *A. gambiae* that occur naturally in the wild.

.....

.....

.....

.....

.....

.....

..... [2]

[Total: 13]

4 Food crops like wheat may be improved by selective breeding and genetic modification.

(a) Outline how wheat crops have been improved by selective breeding.

.....
.....
.....
.....
.....
.....
.....
.....
.....
.....
..... [4]

(b) Variation in height of a strain of wheat plants in a field shows a continuous pattern of variation.

Explain what is meant by continuous variation **and** explain why this type of variation occurs in a population.

.....
.....
.....
.....
.....
.....
.....
..... [3]

(d) Suggest **one** social advantage and **one** environmental advantage of growing glyphosate-resistant wheat.

social advantage

.....

environmental advantage

..... [2]

[Total: 13]

(ii) Outline three characteristic features of members of this domain.

- 1
-
- 2
-
- 3
- [3]

(c) It has been suggested that raccoons may threaten biodiversity and pose a risk to human health in Germany.

Explain how raccoons could cause problems for local biodiversity **and** for human health.

local biodiversity

.....

.....

.....

.....

.....

human health

.....

.....

.....

.....

..... [3]

[Total: 10]

6 The sex chromosomes of domestic chickens are known as **W** and **Z**.

- Male chickens have two **Z** chromosomes.
- Female chickens have one **W** and one **Z** chromosome.

A gene for feather colour in chickens is located on an autosome.

This gene (**C**) has two alleles

- black (**C^B**)
- splashed-white (**C^S**).

When a chicken with black feathers is mated with a chicken with splashed-white feathers, all the offspring will have blue feathers.

A gene for feather pattern is located on the **Z** chromosome but not on the **W** chromosome. This gene has two alleles

- barred (striped) feathers (**A**)
- non-barred feathers (**a**).

(a) State the type of inheritance for feather colour and for feather pattern.

feather colour

feather pattern [2]

(b) A male chicken with black, non-barred feathers was crossed with a female chicken with splashed-white, barred feathers.

All the offspring had blue feathers, but the males were barred and the females were non-barred.

Using the symbols given, draw a genetic diagram to show this cross.

parents
phenotype

male, black,
non-barred feathers

female, splashed-white,
barred feathers

parents
genotype

gametes

offspring
genotypes

offspring
phenotypes

male, blue, barred feathers

female, blue, non-barred
feathers

[5]

(c) Explain how the genotype of a male chicken with blue, barred feathers could be determined.

.....

.....

.....

.....

.....

.....

.....

.....

..... [3]

[Total: 10]

(c) Fig. 7.1 is a diagram of a nephron.

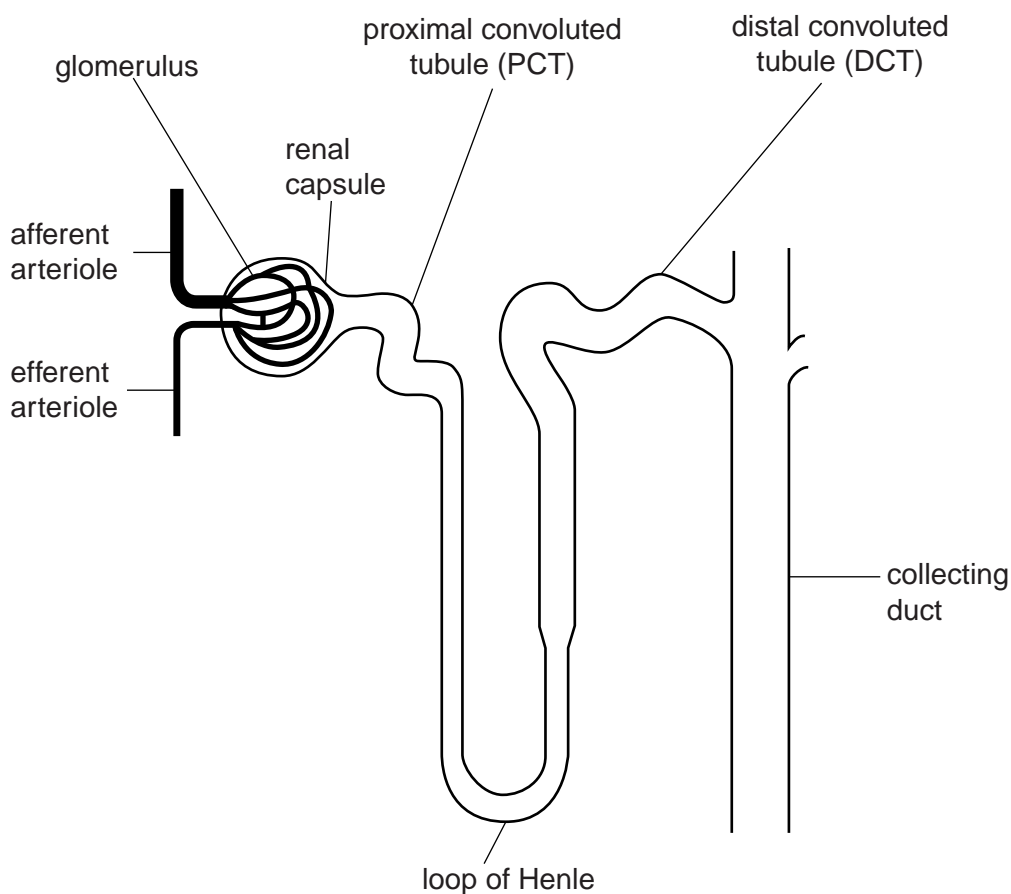


Fig. 7.1

Complete Table 7.1 by naming a part of the nephron that corresponds to each of the statements.

Table 7.1

statement	part of nephron
passes through the medulla
glucose is reabsorbed into the blood
ADH acts on its walls
most of the water is reabsorbed into the blood

[4]

[Total: 11]

8 (a) Fig. 8.1 is an electron micrograph of part of a cholinergic synapse.

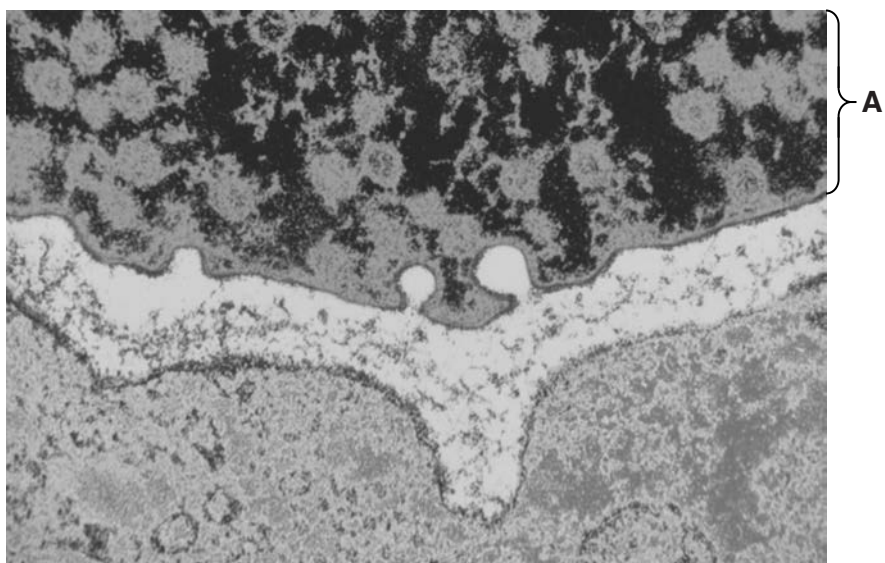


Fig. 8.1

On Fig. 8.1, use label lines and letters to label each of the following:

X – a structure that indicates that **A** is a pre-synaptic neurone

Y – an area that contains many voltage-gated Na⁺ channels

Z – an area that contains both acetylcholine **and** acetylcholinesterase.

[3]

(b) Some insecticides have a similar structure to acetylcholine. Suggest how these insecticides may affect the functioning of acetylcholinesterase.

.....
.....
.....
.....
.....
.....
.....
..... [3]

(c) Outline the roles of synapses in the nervous system.

.....

.....

.....

.....

.....

.....

..... [2]

[Total: 8]

