

Write your name here

Surname

Other names

**Pearson Edexcel**  
**International**  
**Advanced Level**

Centre Number

--	--	--	--	--	--

Candidate Number

--	--	--	--	--

# Geography

**International Advanced Subsidiary**  
**Paper 1: Global Challenges**

Tuesday 16 May 2017 – Afternoon

**Time: 1 hour 45 minutes**

Paper Reference

**WGE01/01****You must have:**

Resource Booklet (enclosed)

Total Marks

## Instructions

- Use **black** ink or ball-point pen.
- **Fill in the boxes** at the top of this page with your name, centre number and candidate number.
- Answer **all** questions in Section A. Answer **either** Question 5 **or** Question 6 in Section B.
- Answer the questions in the spaces provided  
– *there may be more space than you need.*
- Calculators may be used.

## Information

- The total mark for this paper is 90.
- The marks for **each** question are shown in brackets  
– *use this as a guide as to how much time to spend on each question.*

## Advice

- Read each question carefully before you start to answer it.
- Check your answers if you have time at the end.

Turn over ►

P51761A

©2017 Pearson Education Ltd.

1/1/1/1/1/1/1



Pearson

**SECTION A**

**You must use the Resource Booklet.**

**Answer ALL questions in this section. Write your answers in the spaces provided.**

**Some questions must be answered with a cross in a box ☒. If you change your mind about an answer, put a line through the box ☒ and then mark your new answer with a cross ☒.**

**1** Study Figure 1 in the Resource Booklet.

(a) (i) Identify the global region with the highest risk from all hydro-meteorological hazards.

(1)

- A** North America
- B** South Asia
- C** Oceania
- D** Europe

(ii) Describe the pattern of risk from all hydro-meteorological hazards in **Africa**.

(2)

.....

.....

.....

.....

(iii) Explain **one** physical cause of drought in the area labelled X on Figure 1.

(2)

.....

.....

.....

.....

DO NOT WRITE IN THIS AREA

DO NOT WRITE IN THIS AREA

DO NOT WRITE IN THIS AREA





2 Study Figure 2 in the Resource Booklet.

(a) Carbon dioxide is a greenhouse gas.

(i) Name **one** other greenhouse gas.

(1)

(ii) Compare the carbon dioxide emissions in 1993 to those in 2013 shown in Figure 2.

(4)

(iii) Suggest **one** possible explanation for the changes to the emissions shown in Figure 2 for the following countries:

(4)

Germany

China

DO NOT WRITE IN THIS AREA

DO NOT WRITE IN THIS AREA

DO NOT WRITE IN THIS AREA



(b) Explain why adapting to rising sea levels is easier in some locations than others.

(6)

DO NOT WRITE IN THIS AREA

DO NOT WRITE IN THIS AREA

DO NOT WRITE IN THIS AREA

Area with horizontal dotted lines for writing the answer.

**(Total for Question 2 = 15 marks)**



3 Study Figure 3 in the Resource Booklet.

(a) (i) Identify the correct statement about the origin of the 787 aircraft parts shown in Figure 3.

(1)

- A** Most components are made in Japan.
- B** Most components are made in emerging countries.
- C** Most components are made in developed countries.
- D** Most components are made by Boeing.

(ii) Suggest **one** way that Boeing and supplier TNCs might use the internet to manage the production of the 787 aircraft.

(2)

.....

.....

.....

.....

(iii) Explain **one** way that aircraft like the 787 contribute to globalisation.

(2)

.....

.....

.....

.....

DO NOT WRITE IN THIS AREA

DO NOT WRITE IN THIS AREA

DO NOT WRITE IN THIS AREA





4 Study Figure 4 in the Resource Booklet.

(a) (i) Name the country with the lowest percentage urban population. (1)

.....

(ii) Describe the relationship between annual income per capita and percentage urban population shown in Figure 4. (3)

.....

.....

.....

.....

.....

.....

(iii) Suggest **one** possible cause of the relationship shown in Figure 4. (2)

.....

.....

.....

.....

(b) Explain the negative impacts of urbanisation on surrounding rural areas. (3)

.....

.....

.....

.....

.....

.....

DO NOT WRITE IN THIS AREA

DO NOT WRITE IN THIS AREA

DO NOT WRITE IN THIS AREA



(c) Explain the challenges of meeting housing needs in cities in the developing world.

(6)

DO NOT WRITE IN THIS AREA

DO NOT WRITE IN THIS AREA

DO NOT WRITE IN THIS AREA

Area with horizontal dotted lines for writing the answer to question (c).

**(Total for Question 4 = 15 marks)**

**TOTAL FOR SECTION A = 60 MARKS**





DO NOT WRITE IN THIS AREA

DO NOT WRITE IN THIS AREA

DO NOT WRITE IN THIS AREA

Handwriting practice area with 10 horizontal dotted lines.



(b) Assess the extent to which prediction and monitoring technology can help reduce the impacts of natural disasters.

(20)

Area with horizontal dotted lines for writing the answer.

DO NOT WRITE IN THIS AREA

DO NOT WRITE IN THIS AREA

DO NOT WRITE IN THIS AREA



DO NOT WRITE IN THIS AREA

DO NOT WRITE IN THIS AREA

DO NOT WRITE IN THIS AREA

Large blank area with horizontal dotted lines for writing.



P 5 1 7 6 1 A 0 1 3 2 0

DO NOT WRITE IN THIS AREA

DO NOT WRITE IN THIS AREA

DO NOT WRITE IN THIS AREA

(Total for Question 5 = 30 marks)



If you answer Question 6 put a cross in the box  .

6 Study Figure 6 in the Resource Booklet.

(a) Suggest reasons for the pattern of international migrants shown in Figure 6.

(10)

DO NOT WRITE IN THIS AREA

DO NOT WRITE IN THIS AREA

DO NOT WRITE IN THIS AREA

Area with horizontal dotted lines for writing the answer to question 6(a).



P 5 1 7 6 1 A 0 1 5 2 0

DO NOT WRITE IN THIS AREA

DO NOT WRITE IN THIS AREA

DO NOT WRITE IN THIS AREA

Blank area for student work with horizontal dotted lines.



(b) Assess the costs and benefits of globalisation for workers in both developed and developing countries.

(20)

DO NOT WRITE IN THIS AREA

DO NOT WRITE IN THIS AREA

DO NOT WRITE IN THIS AREA

Area with horizontal dotted lines for writing.



DO NOT WRITE IN THIS AREA

DO NOT WRITE IN THIS AREA

DO NOT WRITE IN THIS AREA

Large area with horizontal dotted lines for writing.



DO NOT WRITE IN THIS AREA

DO NOT WRITE IN THIS AREA

DO NOT WRITE IN THIS AREA

Area with horizontal dotted lines for writing.

**(Total for Question 6 = 30 marks)**

**TOTAL FOR SECTION B = 30 MARKS**  
**TOTAL FOR PAPER = 90 MARKS**



DO NOT WRITE IN THIS AREA

DO NOT WRITE IN THIS AREA

DO NOT WRITE IN THIS AREA

**BLANK PAGE**



**Pearson Edexcel**  
**International Advanced Level**

# Geography

**International Advanced Subsidiary**  
**Paper 1: Global Challenges**

Tuesday 16 May 2017 – Afternoon  
**Resource Booklet**

Paper Reference  
**WGE01/01**

**Do not return this Resource Booklet with the question paper.**

Turn over ►

P51761A

©2017 Pearson Education Ltd.

1/1/1/1/1/1/1



  
**Pearson**

SECTION A

The following resource relates to Question 1.

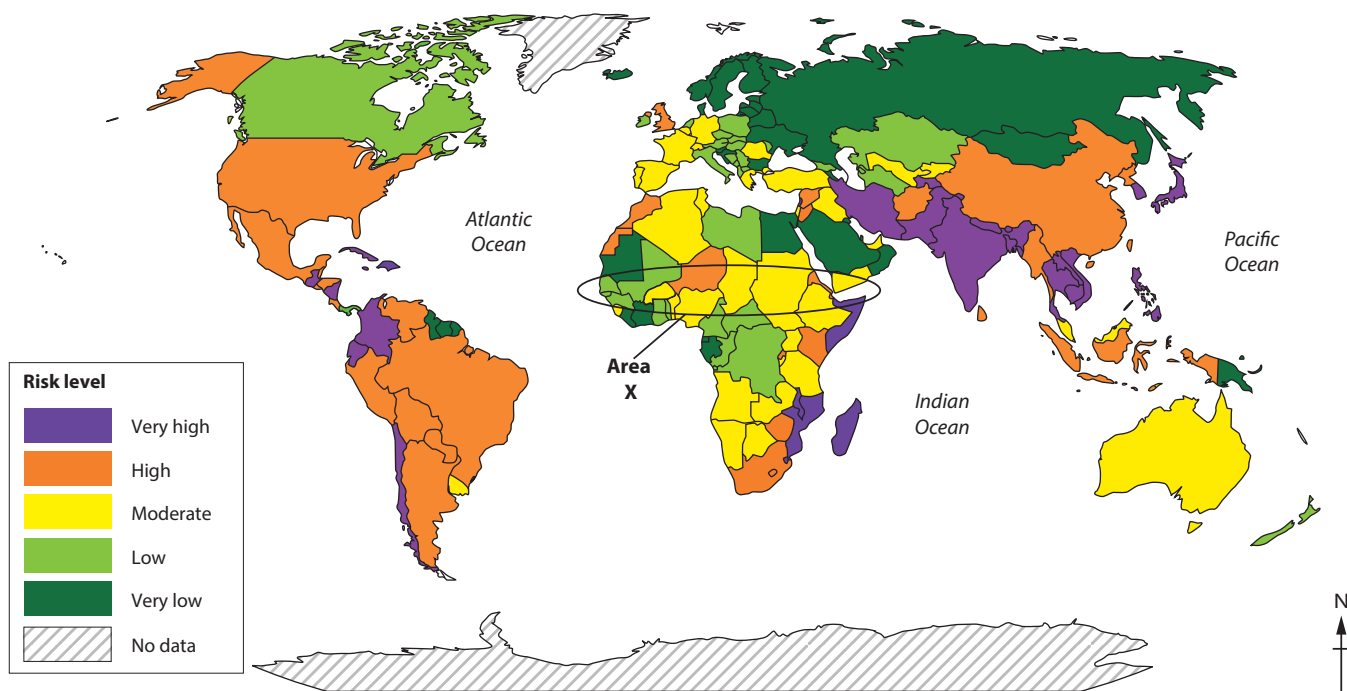


Figure 1

Risk level from all hydro-meteorological hazards (floods, droughts and cyclones)

The following resource relates to Question 2.

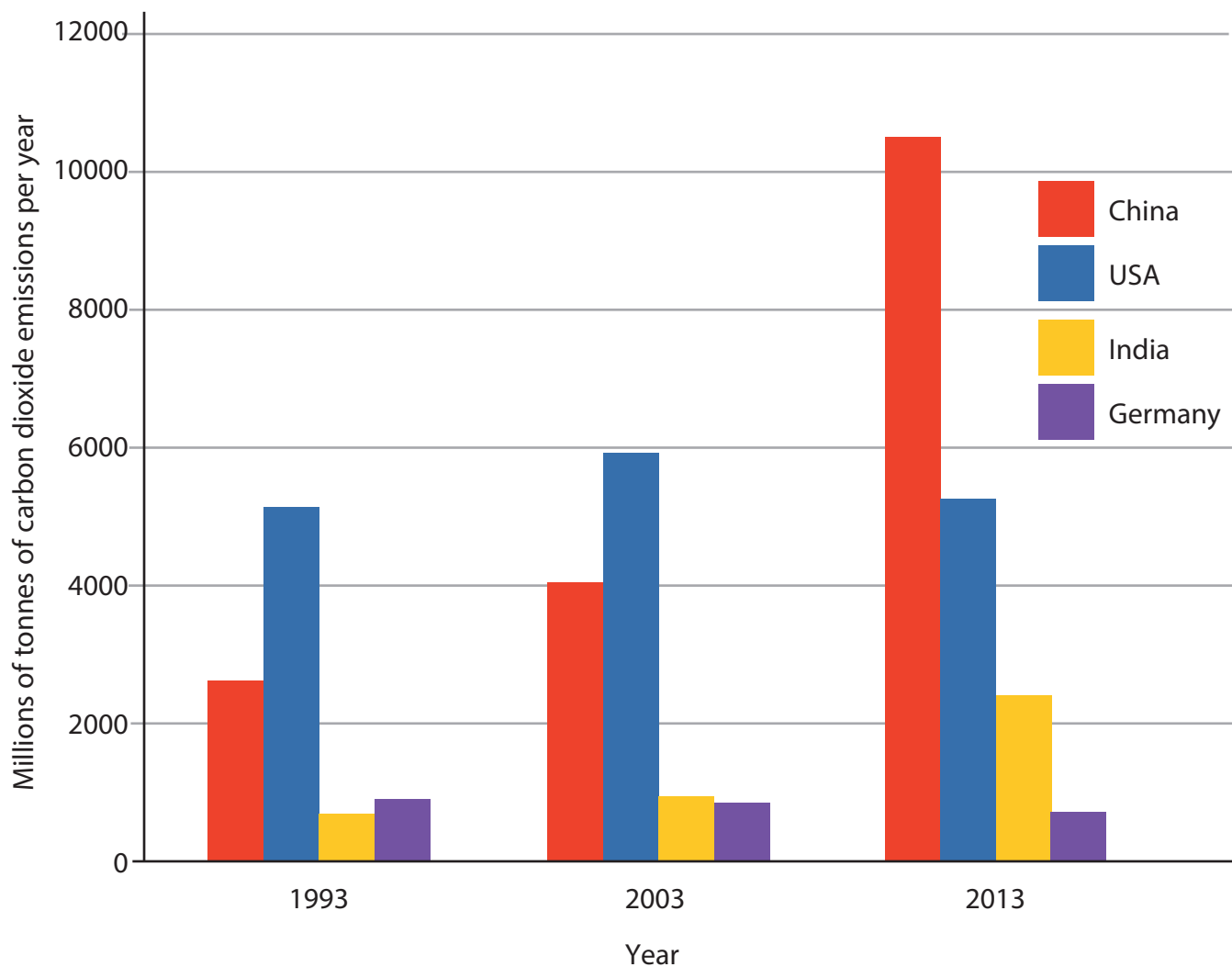


Figure 2

Total carbon dioxide emissions for four countries

The following resource relates to Question 3.

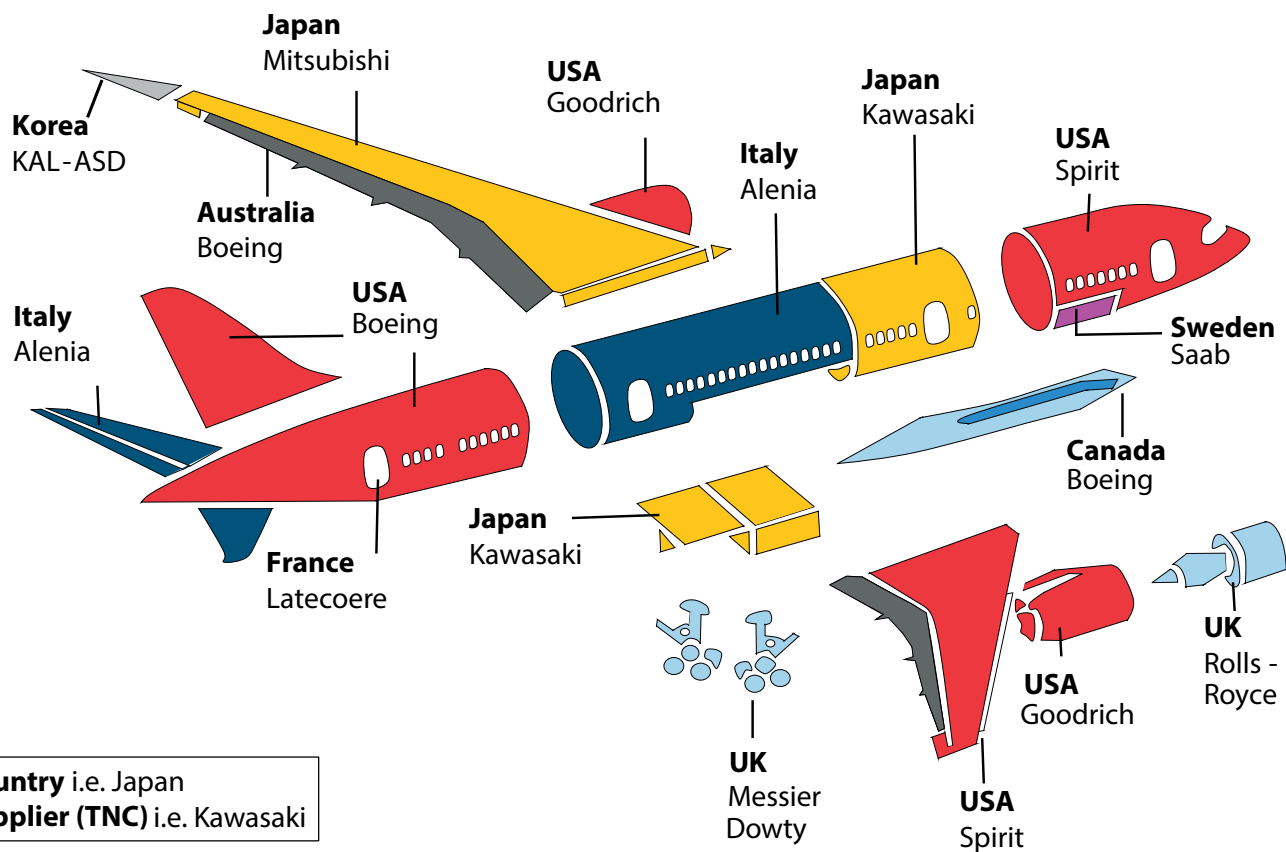


Figure 3

The origin of parts for the USA-based Boeing 787 jet passenger aircraft

The following resource relates to Question 4.

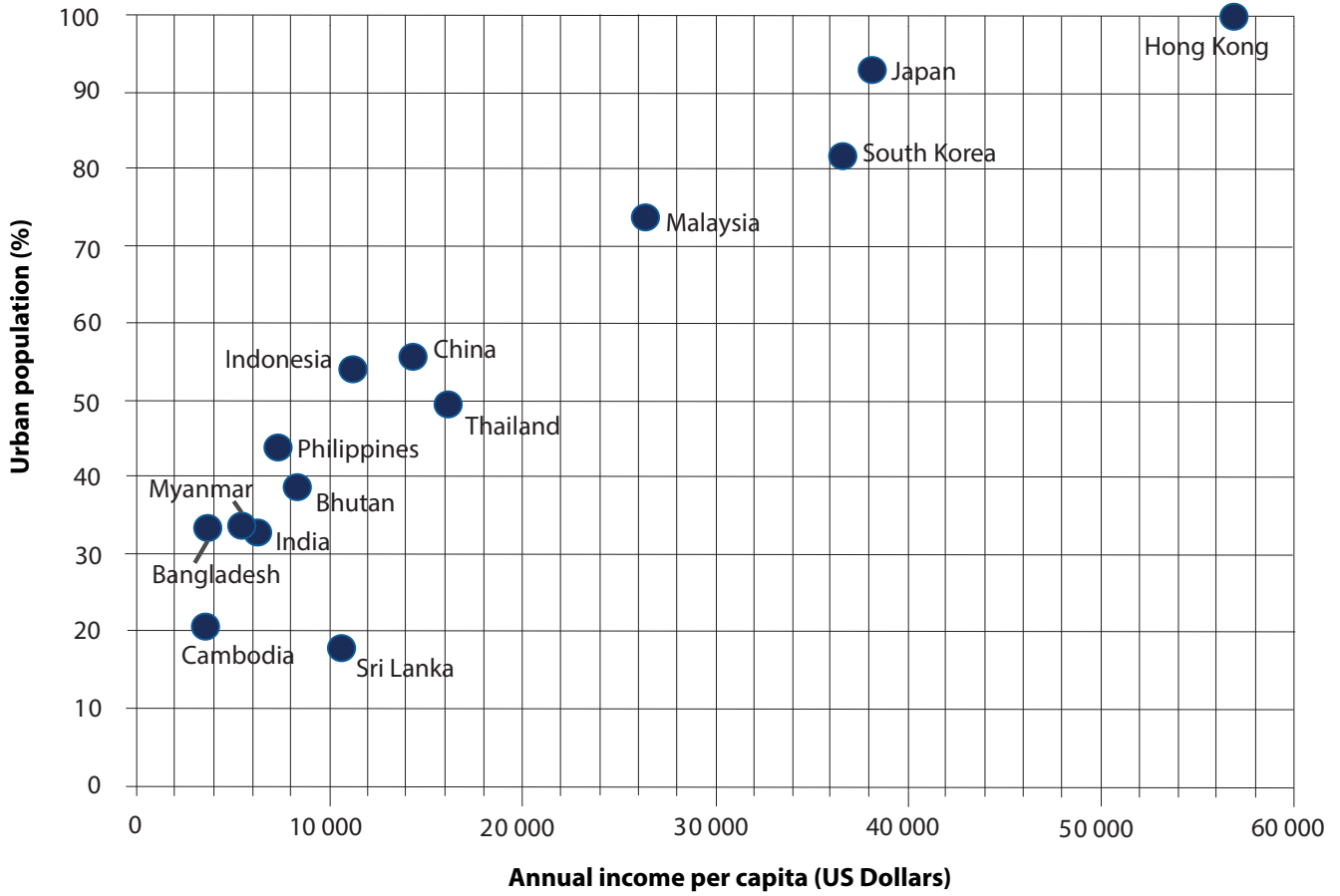
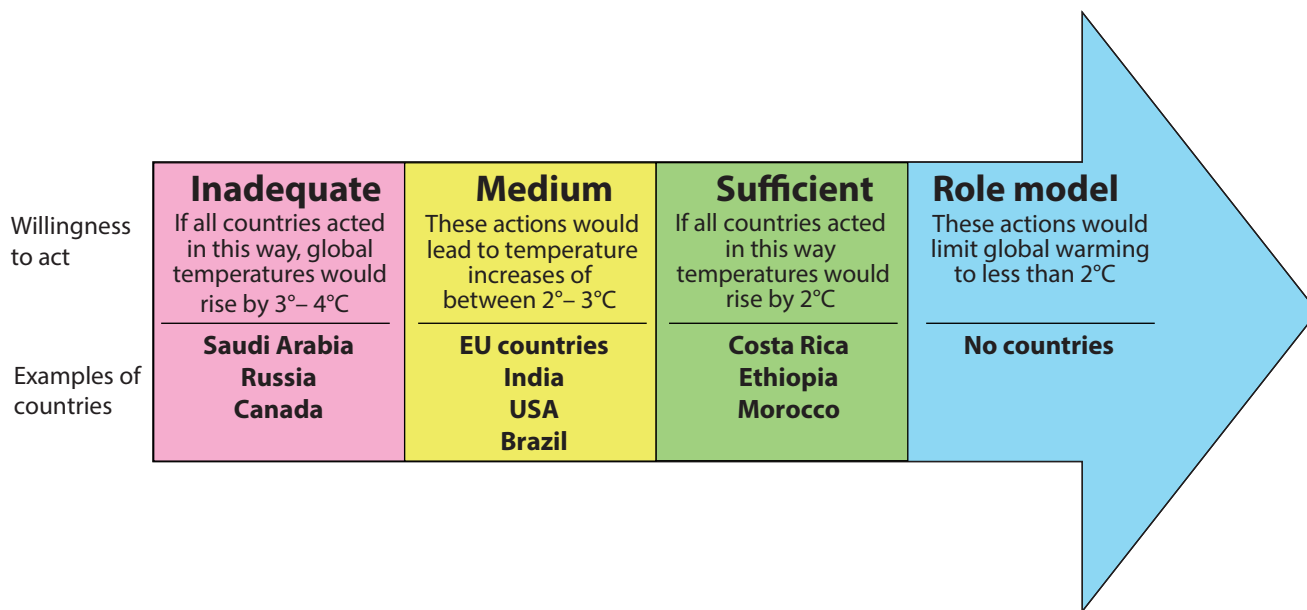


Figure 4

A scattergraph showing annual income per capita and urban population

**SECTION B**

The following resource relates to Question 5.



**Figure 5**

Willingness to act to reduce emissions at the 2015 Paris climate change summit

The following resource relates to Question 6.

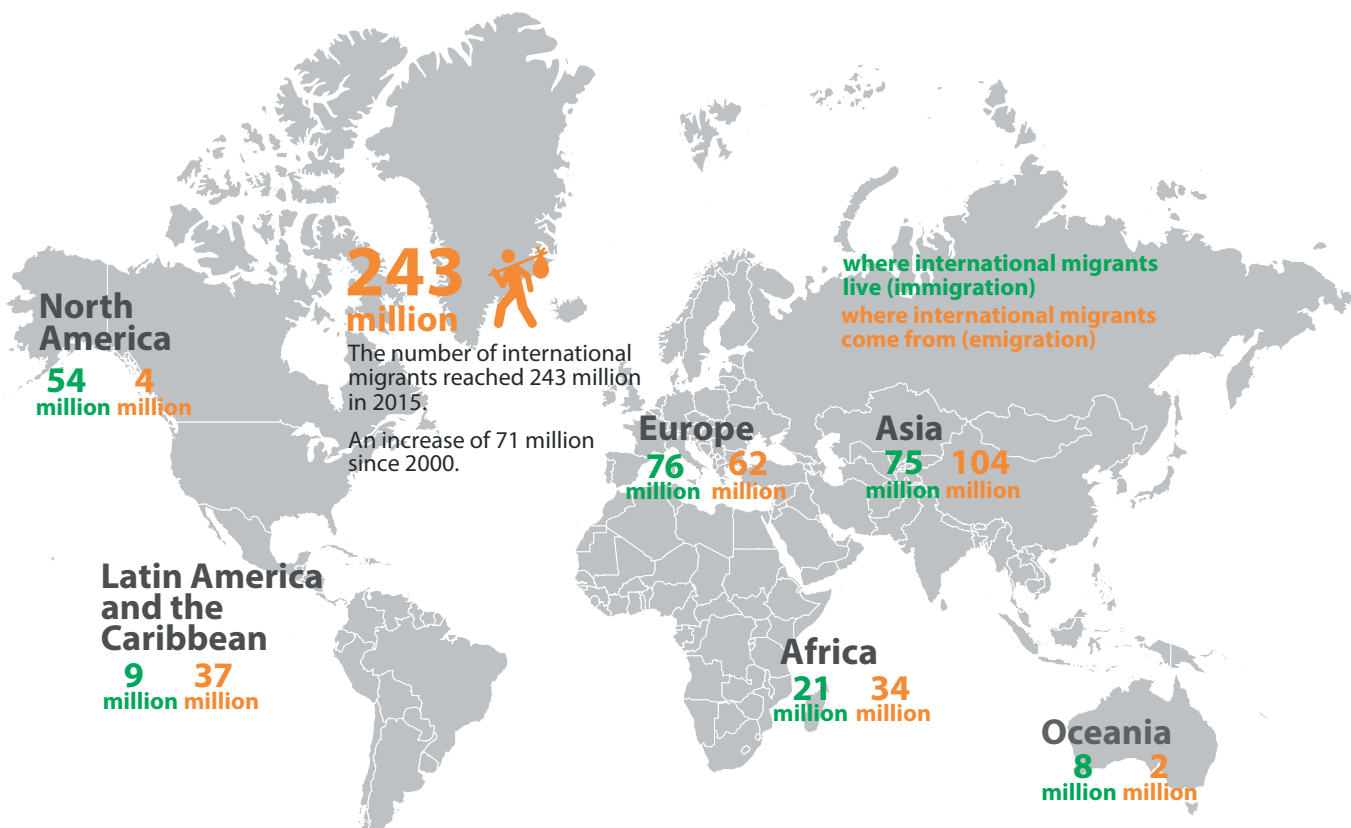


Figure 6

The number of international migrants in 2015

**BLANK PAGE**

Every effort has been made to contact copyright holders to obtain their permission for the use of copyright material. Pearson Education Ltd. will, if notified, be happy to rectify any errors or omissions and include any such rectifications in future editions.

Images used within this paper may be from [www.clipart.com](http://www.clipart.com).