



UNIVERSITY OF CAMBRIDGE INTERNATIONAL EXAMINATIONS
General Certificate of Education Advanced Subsidiary Level and Advanced Level

CANDIDATE
NAME

CENTRE
NUMBER

--	--	--	--	--

CANDIDATE
NUMBER

--	--	--	--

CHEMISTRY

9701/42

Paper 4 Structured Questions

October/November 2009

1 hour 45 minutes

Candidates answer on the Question Paper.

Additional Materials: Data Booklet

READ THESE INSTRUCTIONS FIRST

Write your Centre number, candidate number and name on all the work you hand in.

Write in dark blue or black pen.

You may use a pencil for any diagrams, graphs or rough working.

Do not use staples, paper clips, highlighters, glue or correction fluid.

DO NOT WRITE IN ANY BARCODES.

Section A

Answer **all** questions.

Section B

Answer **all** questions.

You may lose marks if you do not show your working or if you do not use appropriate units.

A Data Booklet is provided.

At the end of the examination, fasten all your work securely together.

The number of marks is given in brackets [] at the end of each question or part question.

For Examiner's Use

1	
2	
3	
4	
5	
6	
7	
8	
9	
Total	

This document consists of **20** printed pages and **4** blank pages.



Section A

Answer **all** questions in the spaces provided.

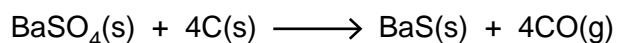
For
Examiner's
Use

- 1 (a) Describe and explain qualitatively the trend in the solubilities of the sulfates of the Group II elements.

.....

 [3]

- (b) The major ore of barium is barytes, BaSO_4 . This is very unreactive, and so other barium compounds are usually made from the sulfide, BaS . This is obtained by heating the crushed ore with carbon, and extracting the BaS with water.



When 250g of ore was heated in the absence of air with an excess of carbon, it was found that the CO produced took up a volume of 140 dm^3 at 450 K and 1 atm.

- (i) Calculate the number of moles of CO produced.

.....

- (ii) Calculate the number of moles of BaSO_4 in the 250g sample of the ore.

.....

- (iii) Calculate the percentage by mass of BaSO_4 in the ore.

.....

[4]

3

- (c) (i) Use the following data and data from the *Data Booklet* to construct a Born-Haber cycle and calculate the lattice energy of BaS.

For
Examiner's
Use

standard enthalpy change of formation of BaS(s)	-460 kJ mol^{-1}
standard enthalpy change of atomisation of Ba(s)	$+180 \text{ kJ mol}^{-1}$
standard enthalpy change of atomisation of S(s)	$+279 \text{ kJ mol}^{-1}$
electron affinity of the sulfur atom	-200 kJ mol^{-1}
electron affinity of the S^- ion	$+640 \text{ kJ mol}^{-1}$

lattice energy = kJ mol^{-1}

- (ii) Explain whether the magnitude of the lattice energy of BaS is likely to be greater or less than that of BaO.

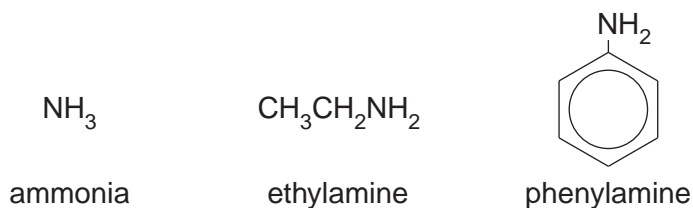
.....
.....

[4]

[Total: 11]

- 2 (a) Describe and explain how the basicities of ammonia, ethylamine and phenylamine differ.

For
Examiner's
Use



.....

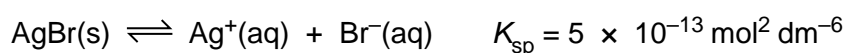
 [3]

- (b) Describe how the use of aqueous silver nitrate and aqueous ammonia can distinguish between aqueous solutions containing chloride, bromide or iodide ions by filling in the following table.

halide	observation when $\text{AgNO}_3(\text{aq})$ is added	observation when dilute $\text{NH}_3(\text{aq})$ is added	observation when concentrated $\text{NH}_3(\text{aq})$ is added
chloride			
bromide			
iodide			

[3]

- (c) Silver bromide is sparingly soluble in water.



- (i) Calculate $[\text{Ag}^+(\text{aq})]$ in a saturated aqueous solution of AgBr.

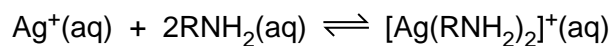
$$[\text{Ag}^+(\text{aq})] = \dots\dots\dots \text{ mol dm}^{-3}$$

- (ii) State and explain whether AgBr will be less or more soluble in 0.1 mol dm^{-3} KBr than it is in pure water.

.....

[2]

(d) Silver ions form complexes with ammonia and with amines.



For
Examiner's
Use

(i) Write an expression for the K_c for this reaction, and state its units.

$K_c =$ units

K_c has the numerical value of 1.7×10^7 when $R = \text{H}$.

(ii) Using your expression for K_c calculate the $[\text{NH}_3(\text{aq})]$ needed to change the $[\text{Ag}^+(\text{aq})]$ in a 0.10 mol dm^{-3} solution of silver nitrate to the value that you calculated in (c)(i).

$[\text{NH}_3(\text{aq})] =$ mol dm^{-3}

(iii) Explain whether you would expect the K_c for the reaction where $R = \text{C}_2\text{H}_5$ to be greater or less than that for the reaction where $R = \text{H}$.

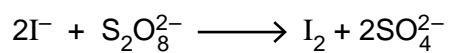
.....
.....

[5]

[Total: 13]

- (d) Outline the role that Fe^{3+} ions play in catalysing the reaction between iodide ions and peroxydisulfate(VI) ions.

For
Examiner's
Use



.....
.....
..... [2]

[Total: 14]

- 4 (a) What is meant by the term *bond energy*?

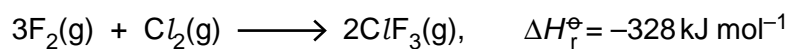
.....
 [2]

- (b) Describe and explain what is observed when a red-hot wire is plunged into separate samples of the gaseous hydrogen halides HCl and HI.
 How are bond energy values useful in interpreting these observations?

.....

 [3]

- (c) The following reaction occurs in the gas phase.



Use these and other data from the *Data Booklet* to calculate the average bond energy of the Cl-F bond in ClF₃. [2]

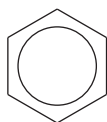
[Total: 7]

For
 Examiner's
 Use

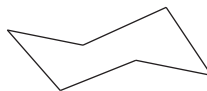
BLANK PAGE

- 5 (a) All the carbon atoms in benzene lie in the same plane. This means that they are *coplanar*, but this is not the case with cyclohexane.

For
Examiner's
Use

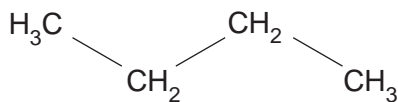


benzene

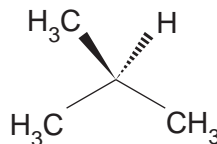


cyclohexane

By rotating the molecule around its several C–C bonds, all the carbon atoms in butane can be made to lie in the same plane, but this is not the case with methylpropane.

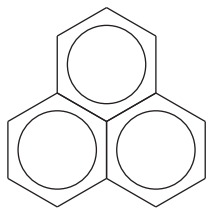


butane

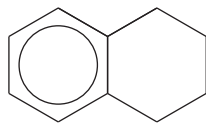


methylpropane

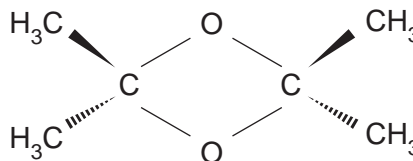
By considering the 3-dimensional geometry of the following five molecules, and allowing rotations around C–C bonds, decide whether or not the **carbon atoms** in each molecule **can be arranged** in a coplanar fashion. Then place a tick in the appropriate column in the table below.



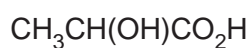
A



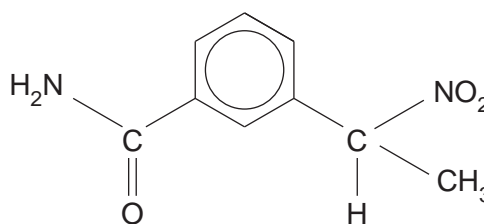
B



C



D



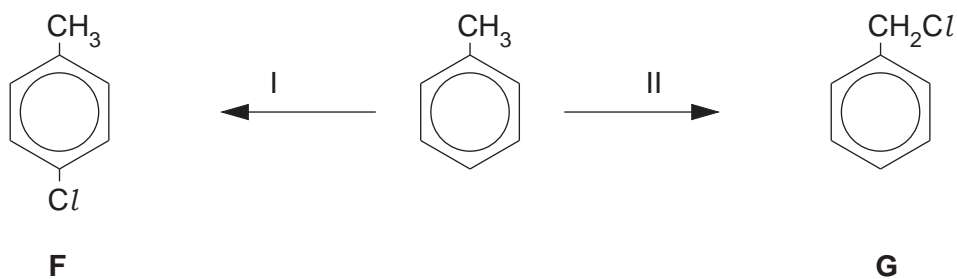
E

compound	all carbon atoms can be coplanar	not all carbon atoms can be coplanar
A		
B		
C		
D		
E		

[3]

- (b) Methylbenzene can react with chlorine under different conditions to give the monochloro derivatives **F** and **G**.

For
Examiner's
Use



Suggest reagents and conditions for each reaction.

reaction I

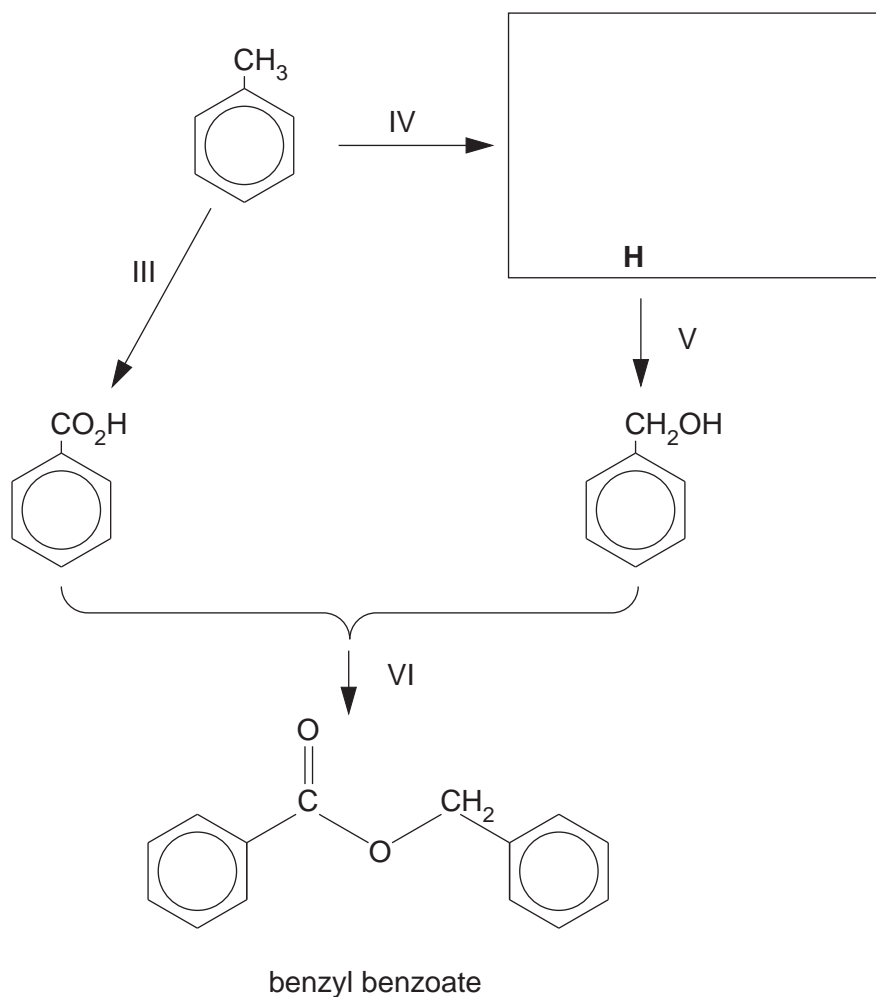
.....

reaction II

..... [2]

- (c) Benzyl benzoate is a constituent of many perfumery products, and has also been used in the treatment of the skin condition known as scabies. It can be made from methylbenzene by the following route, which uses one of the chlorination reactions from (b).

For
Examiner's
Use



- (i) Draw the structural formula of the intermediate **H** in the box above.

(ii) Suggest reagents and conditions for each reaction.

reaction III

.....

reaction V

.....

reaction VI

.....

(iii) State the type of reaction occurring during

reaction III,

.....

reaction V.

.....

[6]

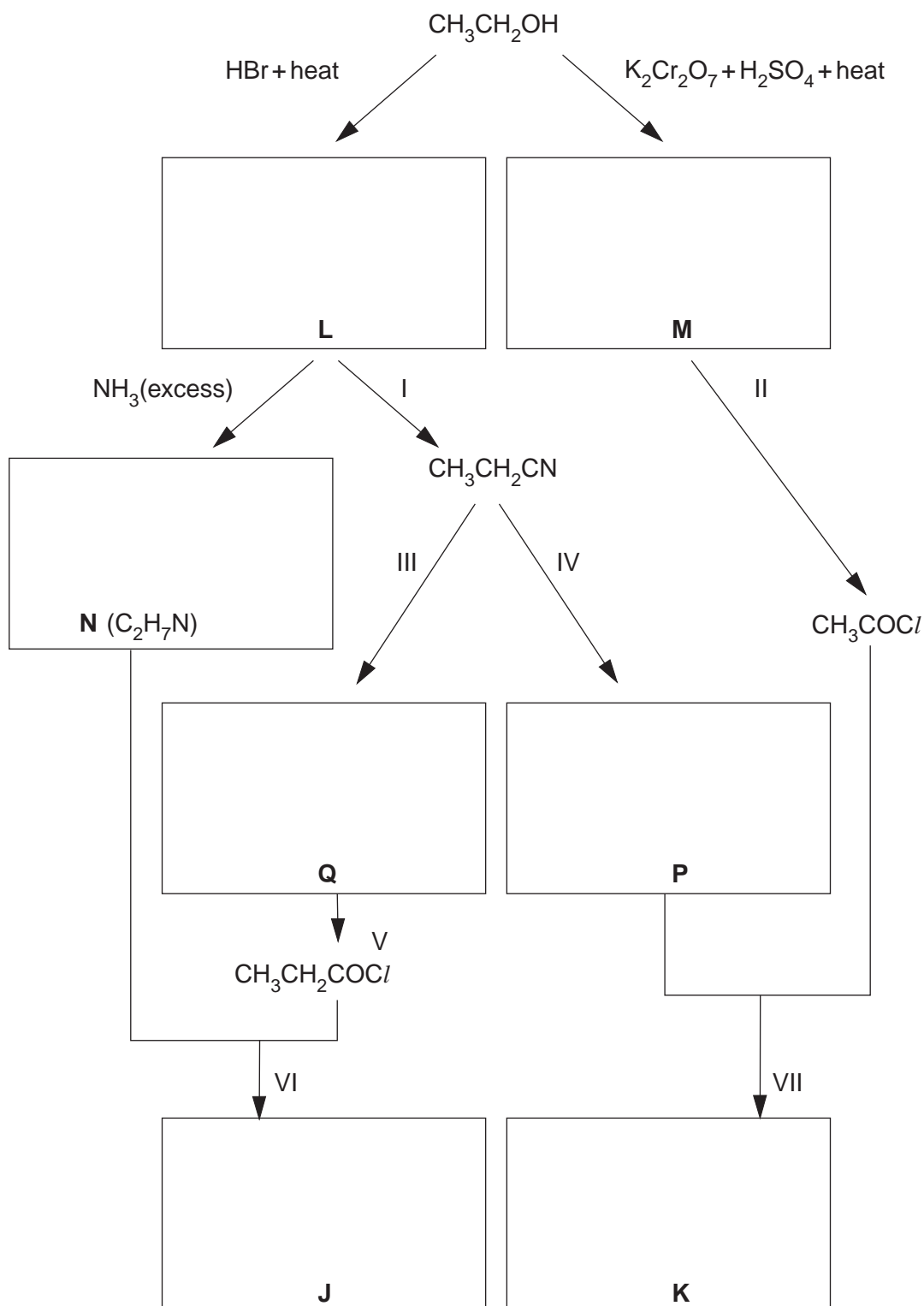
[Total: 11]

For
Examiner's
Use

- 6 Compounds **J** and **K** are isomers with the molecular formula $C_5H_{11}NO$, and they contain the same functional group.

For
Examiner's
Use

They may both be obtained from ethanol by the following routes.



- (a) Draw the structural formulae of the lettered compounds **J** to **Q** in the boxes above. [7]

(b) Suggest reagents and conditions for the following.

reaction I

.....

reaction II

.....

reaction IV

.....[3]

(c) What *type of reaction* is occurring in

reaction IV,

.....

reaction VI?

.....[2]

(d) (i) Name the functional group that is common to compounds **J** and **K**.

.....

(ii) Name the functional group that is common to compounds **N** and **P**.

.....[2]

[Total: 14]

For
Examiner's
Use

Section B

For
Examiner's
Use

Answer **all** questions in the spaces provided.

- 7 (a) Explain, using diagrams where appropriate, the types of interaction responsible for the primary, secondary and tertiary structure of a protein.

primary structure

.....
.....
.....

secondary structure

.....
.....
.....

tertiary structure

.....
.....
.....

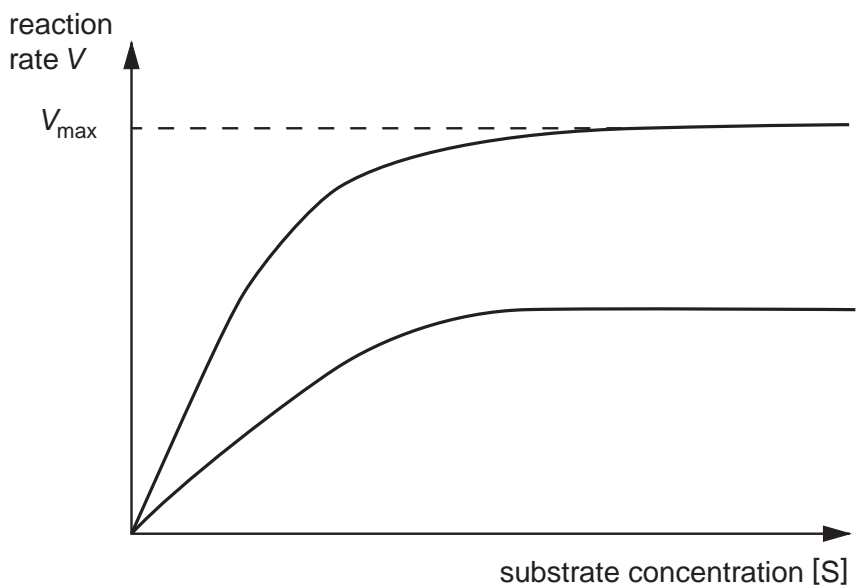
[6]

(b) Enzymes are particular types of protein molecule. Explain briefly how enzymes are able to help to break down molecules in the body.

For
Examiner's
Use

.....
.....
.....
..... [2]

(c) The graph below shows the effect of inhibition on an enzyme-catalysed reaction.



State the type of inhibition shown, giving a reason to support your answer.

type of inhibition

reason

..... [2]

[Total: 10]

- 8 The residues from organohalogen pesticides are known to be a major cause of the decline in numbers of different birds of prey in many countries. These residues are concentrated in birds at the top of food chains.

For
Examiner's
Use

- (a) Analysis of the bodies of birds of prey show that the pesticide residues accumulate in the fatty tissues of the birds. This is because of the high partition coefficient between the fat in the tissues and water found in blood.

Explain what is meant by the term *partition coefficient*.

.....
.....
.....[2]

- (b) A particular pesticide has a partition coefficient of 8.0 between the solvent hexane and water. If a 25cm³ sample of water containing 0.0050g of the pesticide is shaken with a 25cm³ sample of hexane, calculate the mass of pesticide that will dissolve in the hexane layer.

[2]

- (c) Compounds used as pesticides may contain bromine or chlorine.

- (i) What would be the difference in the ratio of the M: M+2 peaks if the pesticide contained one chlorine rather than one bromine atom?

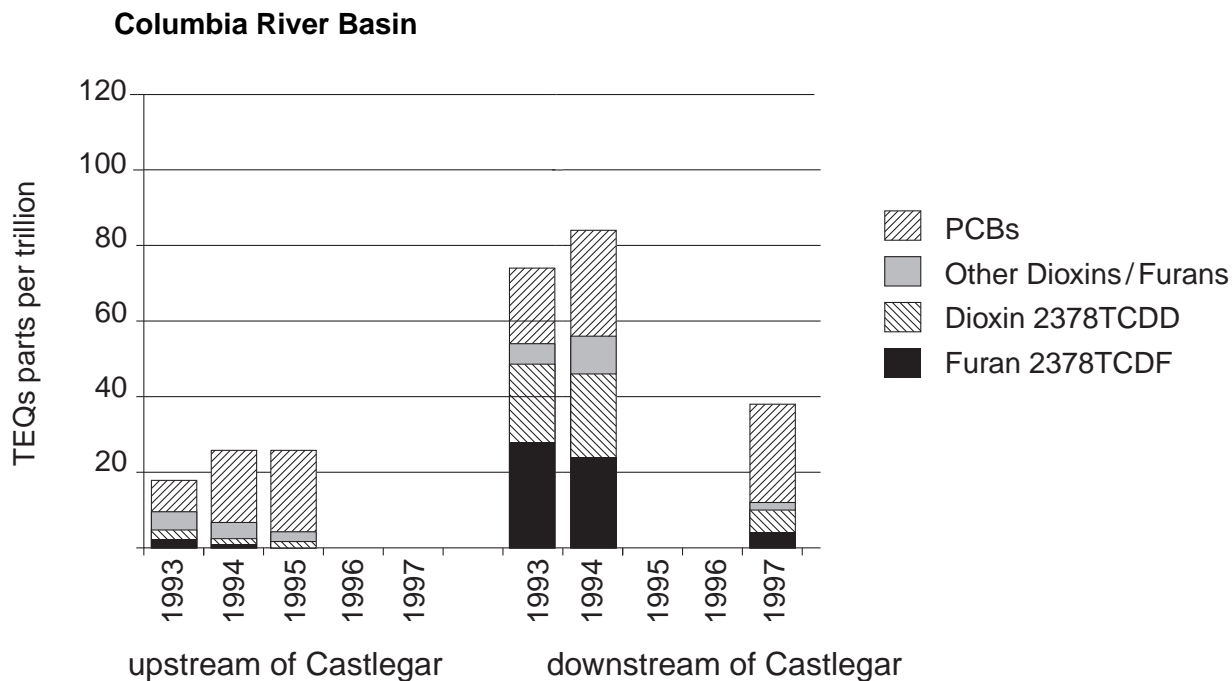
.....

- (ii) If a given pesticide contains **two** chlorine atoms per molecule, deduce the relative heights of the M, M+2 and M+4 peaks.

[3]

- (d) The following graph shows the occurrence of pesticide residues in the eggs of fish-eating birds of prey upstream and downstream of a paper mill at Castlegar on the Columbia River in Canada.

For
Examiner's
Use



PCBs, the dioxin 2378TCDD, and the furan 2378TCDF all come from chemicals containing chlorine.

- (i) Suggest which compounds are present directly as a result of the paper mill.

.....

- (ii) By studying the data for 1994, suggest which chemical(s) come from sources other than the paper mill.

.....

- (iii) Compare the downstream data for 1994 with that for 1997. Suggest what might be responsible for the change.

.....

- (iv) A molecule of 2378TCDD contains four chlorine atoms. How many molecular ion peaks would this compound show in its mass spectrum?

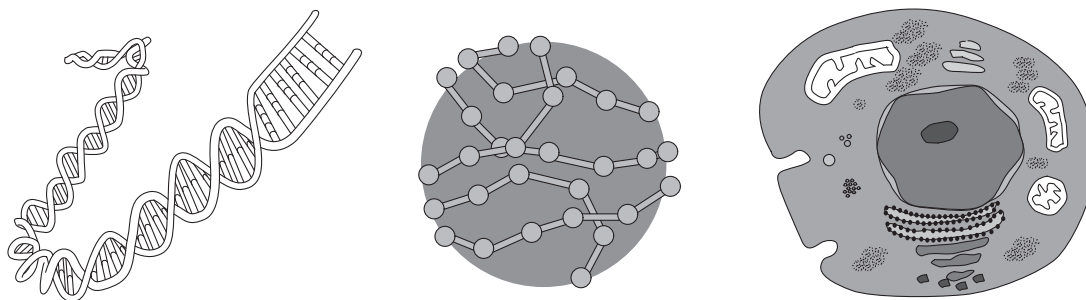
.....

[4]

[Total:11]

- 9 (a) Put the following items in order of **increasing** size. Use the number 1 to indicate the smallest and 3 to indicate the largest.

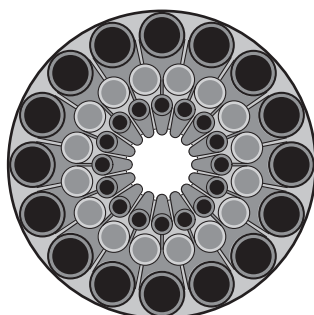
For
Examiner's
Use



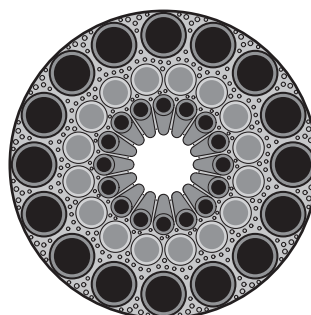
length of DNA molecule in a chromosome	nanosphere diameter	cell diameter

[2]

- (b) Nanotechnology has an increasing range of uses across a number of fields including sport. For example, golf clubs are now being made using nanomaterials.



cross-section of normal golf club shaft



cross-section of golf club shaft with nanomaterial fill

Use the diagrams above and your knowledge of nanomaterials to suggest **two** properties of the new shafts. Explain your answers.

(i)

.....

.....

(ii)

.....

.....

[2]

- (c) A mixture of nano-sized particles of tungsten and vanadium(IV) oxide can be applied to the surface of windows and reflects heat whilst letting all light in the visible range through.

For
Examiner's
Use

Suggest how this variable reflective property is possible using nano-sized particles.

.....
.....
..... [2]

- (d) Although silver is well-known as a precious metal, its medicinal properties have been used for hundreds of years. In ancient Greece silver was used to purify water and until the development of antibiotics, silver was important in the treatment of large wounds.

(i) What property of silver makes it useful for jewellery?

.....

(ii) Suggest the property of silver that makes it useful in the treatment of large wounds.

.....

(iii) Suggest why nano-sized silver particles are more useful in treating wounds.

.....

.....

[3]

[Total: 9]

BLANK PAGE

BLANK PAGE

BLANK PAGE

Permission to reproduce items where third-party owned material protected by copyright is included has been sought and cleared where possible. Every reasonable effort has been made by the publisher (UCLES) to trace copyright holders, but if any items requiring clearance have unwittingly been included, the publisher will be pleased to make amends at the earliest possible opportunity.

University of Cambridge International Examinations is part of the Cambridge Assessment Group. Cambridge Assessment is the brand name of University of Cambridge Local Examinations Syndicate (UCLES), which is itself a department of the University of Cambridge.