



UNIVERSITY OF CAMBRIDGE INTERNATIONAL EXAMINATIONS
General Certificate of Education Advanced Subsidiary Level and Advanced Level

GEOGRAPHY

9696/12

Paper 1 Core Geography

October/November 2012

INSERT

3 hours

READ THESE INSTRUCTIONS FIRST

This Insert contains all the Figures, the Tables and the Photograph referred to in the questions.

This document consists of **7** printed pages and **1** blank page.



Photograph A for Question 1



Fig. 1 for Question 2

Night time temperatures across an urban area

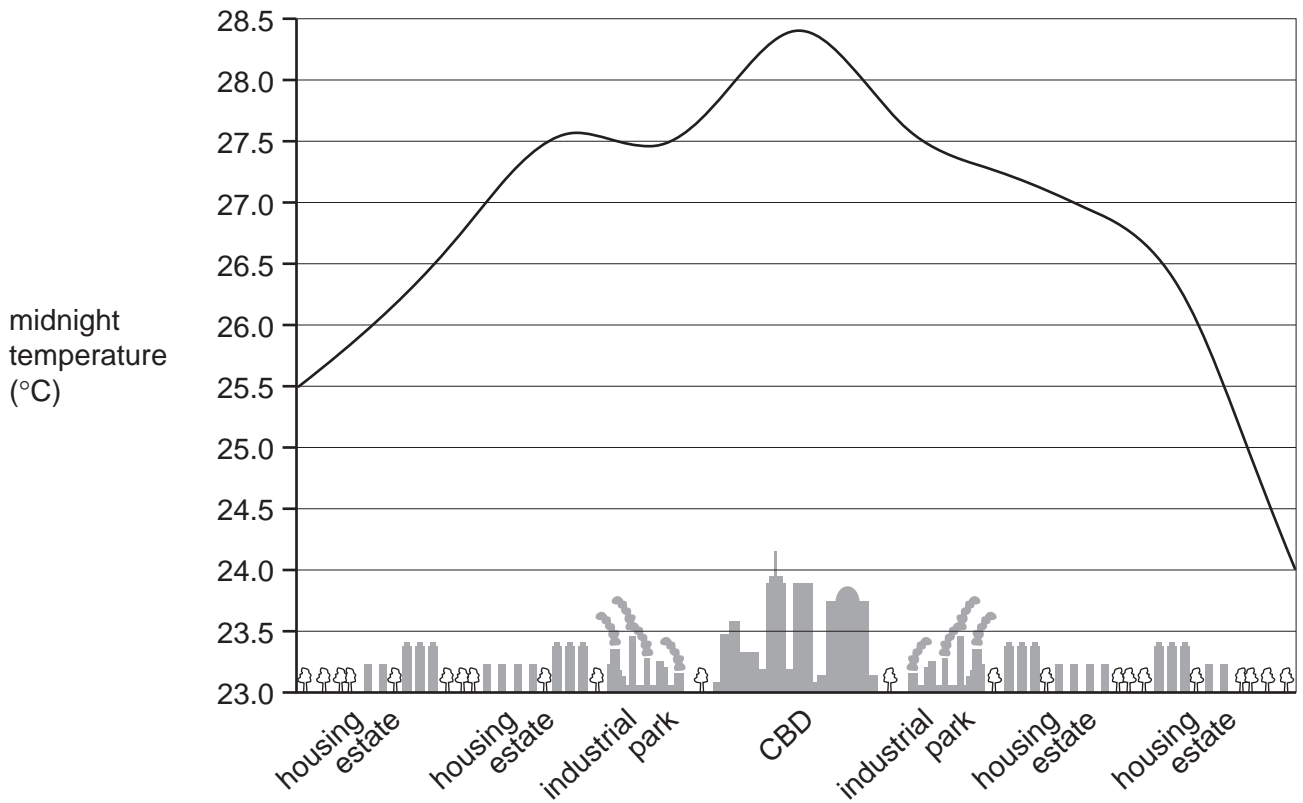
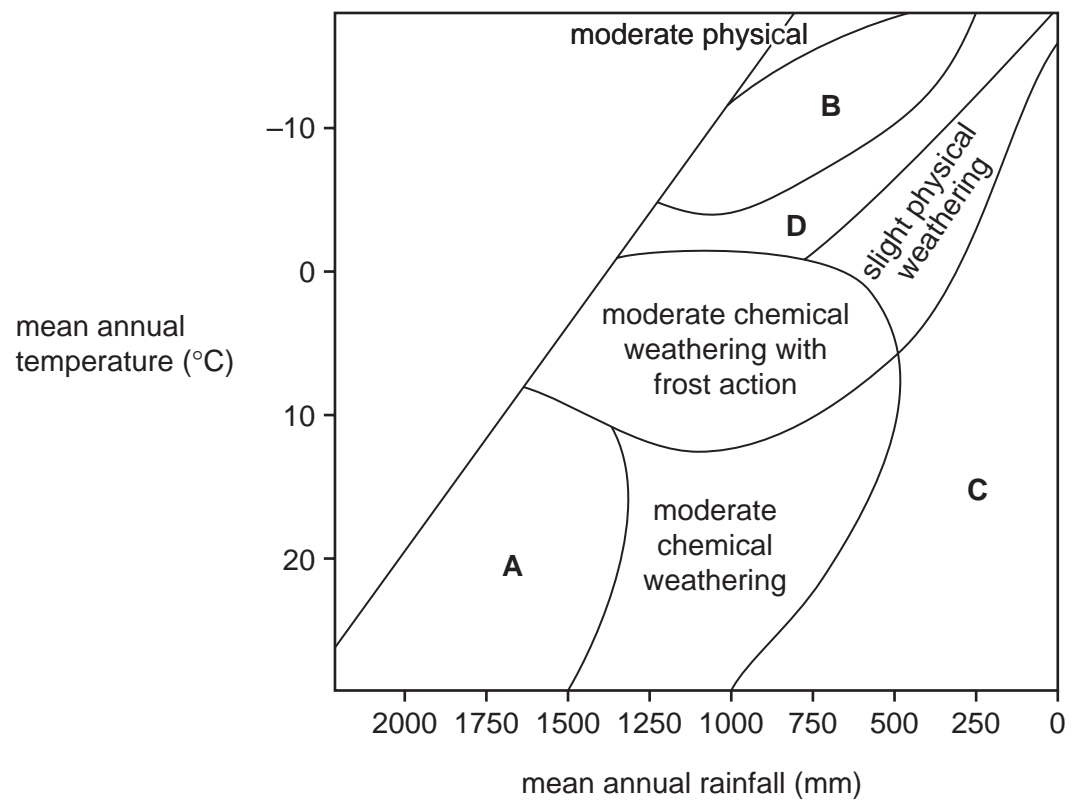


Fig. 2 for Question 3

Weathering processes and climate



Tables 1A and 1B for Question 4

Countries with population aged over 65 years, 2004

Top 5 countries by percentage of population aged over 65 years

rank	country	number (millions)	percentage
1	Italy	11.07	19.3
2	Japan	24.52	19.2
3	Greece	2.06	18.7
4	Germany	14.97	18.1
5	Belgium	1.82	17.6

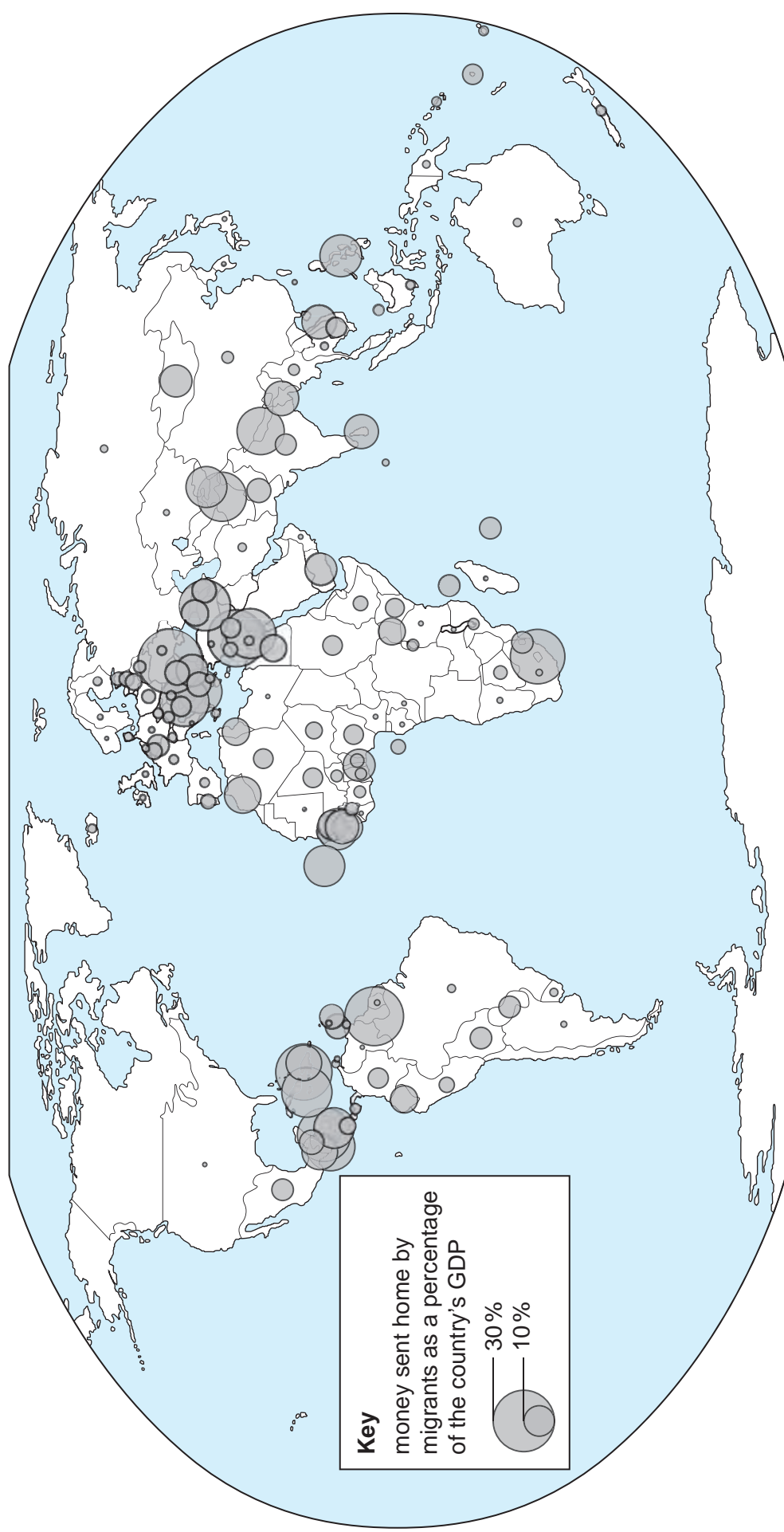
Table 1A

Top 5 countries by number of people aged over 65 years

rank	country	number (millions)	percentage
1	China	97.15	7.4
2	India	56.51	5.2
3	USA	36.39	12.3
4	Japan	24.51	19.2
5	Russian Federation	19.89	14.0

Table 1B

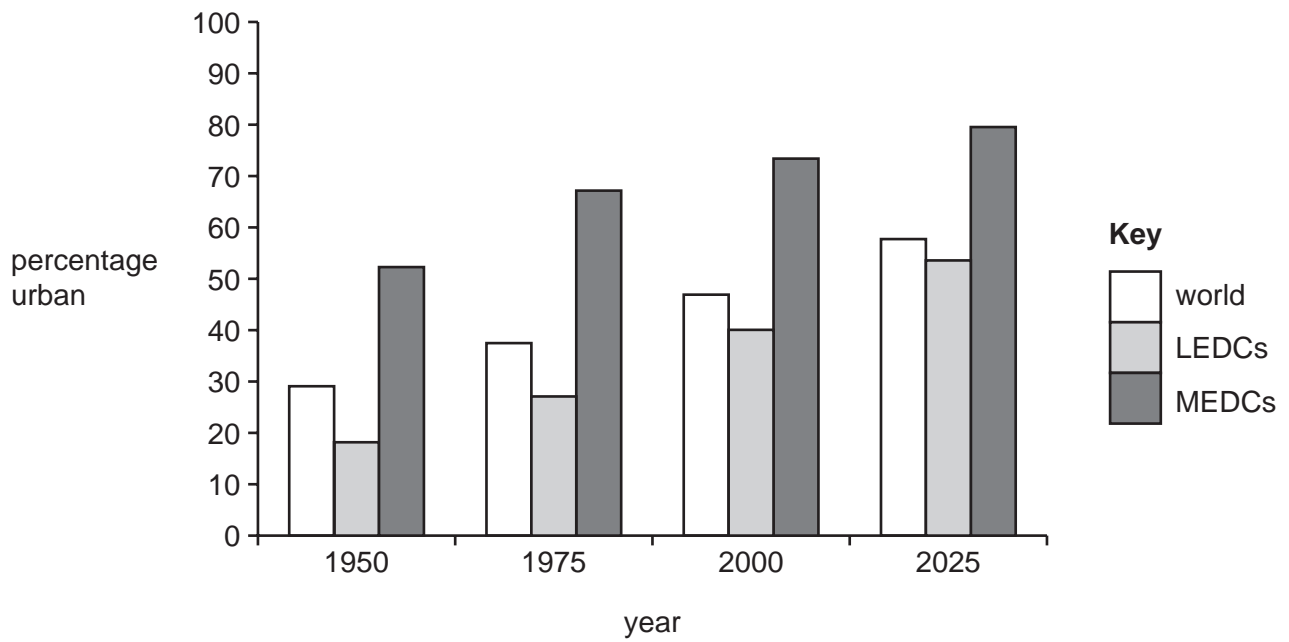
Fig. 3 for Question 5
Remittances received from international migrants as a percentage of the country's GDP, 2006



7

Fig. 4 for Question 6

Percentage urban population in 1950, 1975 and 2000 and predicted urban population in 2025



BLANK PAGE

Permission to reproduce items where third-party owned material protected by copyright is included has been sought and cleared where possible. Every reasonable effort has been made by the publisher (UCLES) to trace copyright holders, but if any items requiring clearance have unwittingly been included, the publisher will be pleased to make amends at the earliest possible opportunity.

University of Cambridge International Examinations is part of the Cambridge Assessment Group. Cambridge Assessment is the brand name of University of Cambridge Local Examinations Syndicate (UCLES), which is itself a department of the University of Cambridge.