



UNIVERSITY OF CAMBRIDGE INTERNATIONAL EXAMINATIONS  
General Certificate of Education  
Advanced Subsidiary Level and Advanced Level

CANDIDATE  
NAME

CENTRE  
NUMBER

--	--	--	--	--

CANDIDATE  
NUMBER

--	--	--	--



**BIOLOGY**

**9700/21**

Paper 2 Structured Questions AS

**October/November 2013**

**1 hour 15 minutes**

Candidates answer on the Question Paper.

No Additional Materials are required.

**READ THESE INSTRUCTIONS FIRST**

Write your Centre number, candidate number and name in the spaces provided at the top of this page.

Write in dark blue or black ink.

You may use a soft pencil for any diagrams, graphs or rough working.

Do not use staples, paper clips, highlighters, glue or correction fluid.

**DO NOT WRITE IN ANY BARCODES.**

Answer **all** questions.

Electronic calculators may be used.

At the end of the examination, fasten all your work securely together.

The number of marks is given in brackets [ ] at the end of each question or part question.

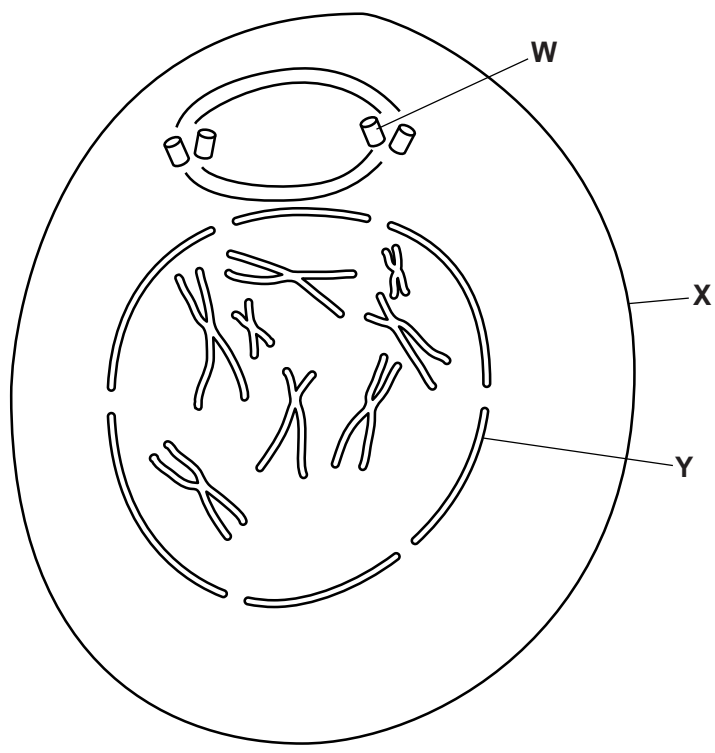
This document consists of **15** printed pages and **1** blank page.



Answer **all** the questions.

For  
Examiner's  
Use

1 Fig. 1.1 shows a cell of a female fruit fly, *Drosophila melanogaster*, during a stage of mitosis.



**Fig. 1.1**

- (a) (i) Name the stage of mitosis shown in Fig. 1.1.  
 ..... [1]
- (ii) Shade a pair of homologous chromosomes. [1]
- (iii) Name the structure labelled **W** and state its function.  
 .....  
 .....  
 ..... [2]



- 2 (a) Table 2.1 shows eight ions that are biologically important.

**Table 2.1**

ammonium ( $\text{NH}_4^+$ )	<b>A</b>
hydrogen ( $\text{H}^+$ )	<b>B</b>
hydrogen carbonate ( $\text{HCO}_3^-$ )	<b>C</b>
iron ( $\text{Fe}^{2+}$ )	<b>D</b>
magnesium ( $\text{Mg}^{2+}$ )	<b>E</b>
nitrate ( $\text{NO}_3^-$ )	<b>F</b>
phosphate ( $\text{PO}_4^{3-}$ )	<b>G</b>
sulfate ( $\text{SO}_4^{2-}$ )	<b>H</b>

For  
Examiner's  
Use

Choose one ion to match each of the following statements. In each case write **one** letter from Table 2.1. You may use each letter (**A** to **H**) once, more than once or not at all.

- (i) A component of polynucleotides.

.....[1]

- (ii) Ion produced by enzyme activity inside red blood cells.

.....[1]

- (iii) Ion used in the production of all amino acids in chloroplasts.

.....[1]

- (iv) Ion that diffuses through carrier proteins with sucrose into companion cells in phloem tissue.

.....[1]

- (v) Component of haem group in haemoglobin that binds oxygen.

.....[1]





**Question 3 starts on page 8**



(b) With reference to Fig. 3.1, explain:

For  
Examiner's  
Use

(i) how alveoli are adapted for gaseous exchange

.....  
.....  
.....  
.....  
.....  
.....  
.....[3]

(ii) how macrophages function to protect the lungs from becoming infected.

.....  
.....  
.....  
.....  
.....  
.....  
.....  
.....[4]

(c) Phagocytes release enzymes that digest proteins. In smokers, this may lead to the large-scale destruction of alveolar walls.

Outline the effects of this destruction on a person's health.

.....  
.....  
.....  
.....  
.....  
.....[3]

[Total: 12]



(b) (i) Suggest why cholesterol is packaged into lipoproteins before release from liver cells into the blood.

For  
Examiner's  
Use

.....  
.....  
.....  
..... [1]

(ii) Explain why cells of the body need to be supplied with cholesterol.

.....  
.....  
.....  
..... [2]

(c) Cholesterol is also packaged into vesicles by the SER and then secreted from the cell into small fluid-filled spaces between the liver cells. These spaces form ducts that drain into the gall bladder to form bile.

Suggest how cholesterol is secreted into ducts, such as the duct in Fig. 4.1.

.....  
.....  
.....  
..... [2]

(d) State **one** function of the Golgi apparatus **other than** the packaging of substances into vesicles for transport.

.....  
..... [1]

[Total: 9]

- 5 Table 5.1 shows the triplets of bases on the template polynucleotide of DNA for some amino acids.

For  
Examiner's  
Use

**Table 5.1**

amino acid		DNA triplets
glutamic acid	(glu)	CTT CTC
histidine	(his)	GTA GTG
leucine	(leu)	GAA GAG GAT GAC
proline	(pro)	GGA GGG GGT GGC
threonine	(thr)	TGA TGG TGT TGC
valine	(val)	CAA CAG CAT CAC

Fig. 5.1 shows the base sequences in DNA and mRNA for the first seven amino acids of the  $\beta$  chain of haemoglobin.

DNA	CAC	.....	GAC	TGA	GGA	CTC	CTC
mRNA	GUG	CAC	CUG	.....	CCU	GAG	GAG
$\beta$ chain	val	his	.....	thr	pro	glu	glu

**Fig. 5.1**

- (a) (i) Use Table 5.1 to complete Fig. 5.1. [3]

- (ii) State the term used to describe the sequence of amino acids in a polypeptide.

.....[1]



- 6 In some ecosystems, certain species fulfil important roles in maintaining biodiversity in communities. These species are often known as keystone species.

For  
Examiner's  
Use

The sea otter, *Enhydra lutris*, is found in waters of the northern and eastern coasts of the Pacific, where it occupies a niche as a predator. These coastal waters are rich in kelp communities. Kelp are very large seaweeds that form 'underwater forests'.

In the 19<sup>th</sup> century the sea otter was hunted for its fur, with the result that populations decreased. A consequence of this reduction in numbers was the disappearance of much of the kelp. Conservation measures in the 20<sup>th</sup> century restored the numbers of sea otters.

Fig. 6.1 shows the food web for this ecosystem.

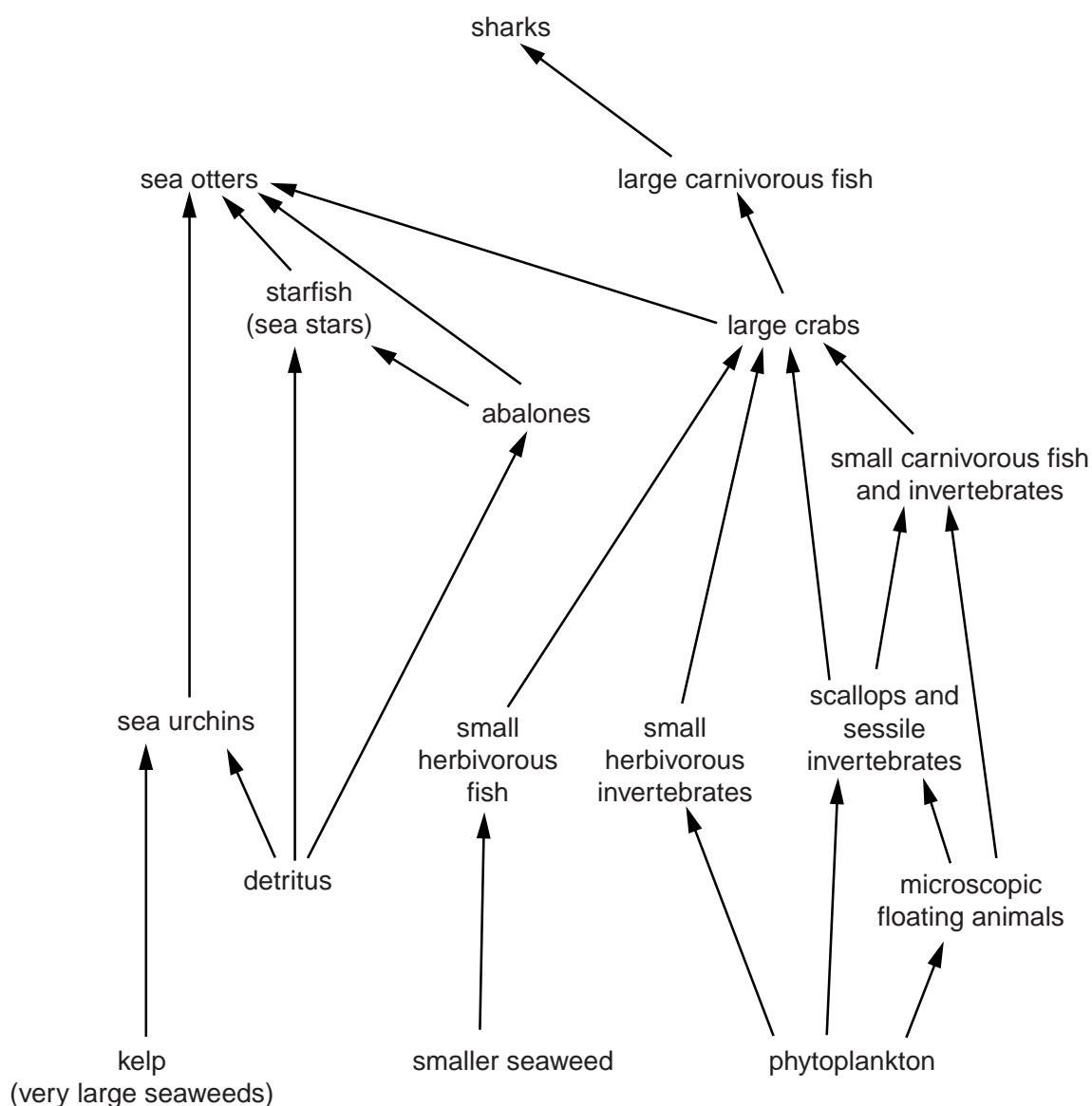


Fig. 6.1

(a) Explain the meaning of the terms *niche* and *community*.

For  
Examiner's  
Use

*niche* .....  
.....  
.....  
.....

*community* .....  
.....  
.....  
..... [2]

(b) With reference to the food web in Fig. 6.1, suggest why sea otters are considered to be a keystone species.

.....  
.....  
.....  
.....  
.....  
.....  
.....  
.....  
.....  
.....  
.....  
.....  
.....  
.....  
.....  
.....  
..... [4]

(c) Suggest how the efficiency of energy transfer from kelp to sea urchins could be determined.

.....  
.....  
.....  
.....  
.....  
.....  
.....  
.....  
.....  
..... [3]

[Total: 9]

**BLANK PAGE**

---

*Copyright Acknowledgements:*

Fig. 4.1 © DON W. FAWCETT/SCIENCE PHOTO LIBRARY.

Permission to reproduce items where third-party owned material protected by copyright is included has been sought and cleared where possible. Every reasonable effort has been made by the publisher (UCLES) to trace copyright holders, but if any items requiring clearance have unwittingly been included, the publisher will be pleased to make amends at the earliest possible opportunity.

University of Cambridge International Examinations is part of the Cambridge Assessment Group. Cambridge Assessment is the brand name of University of Cambridge Local Examinations Syndicate (UCLES), which is itself a department of the University of Cambridge.