

Cambridge
International
AS & A Level

Cambridge International Examinations
Cambridge International Advanced Subsidiary and Advanced Level

GEOGRAPHY

9696/11

Paper 1 Core Geography

October/November 2015

INSERT

3 hours

READ THESE INSTRUCTIONS FIRST

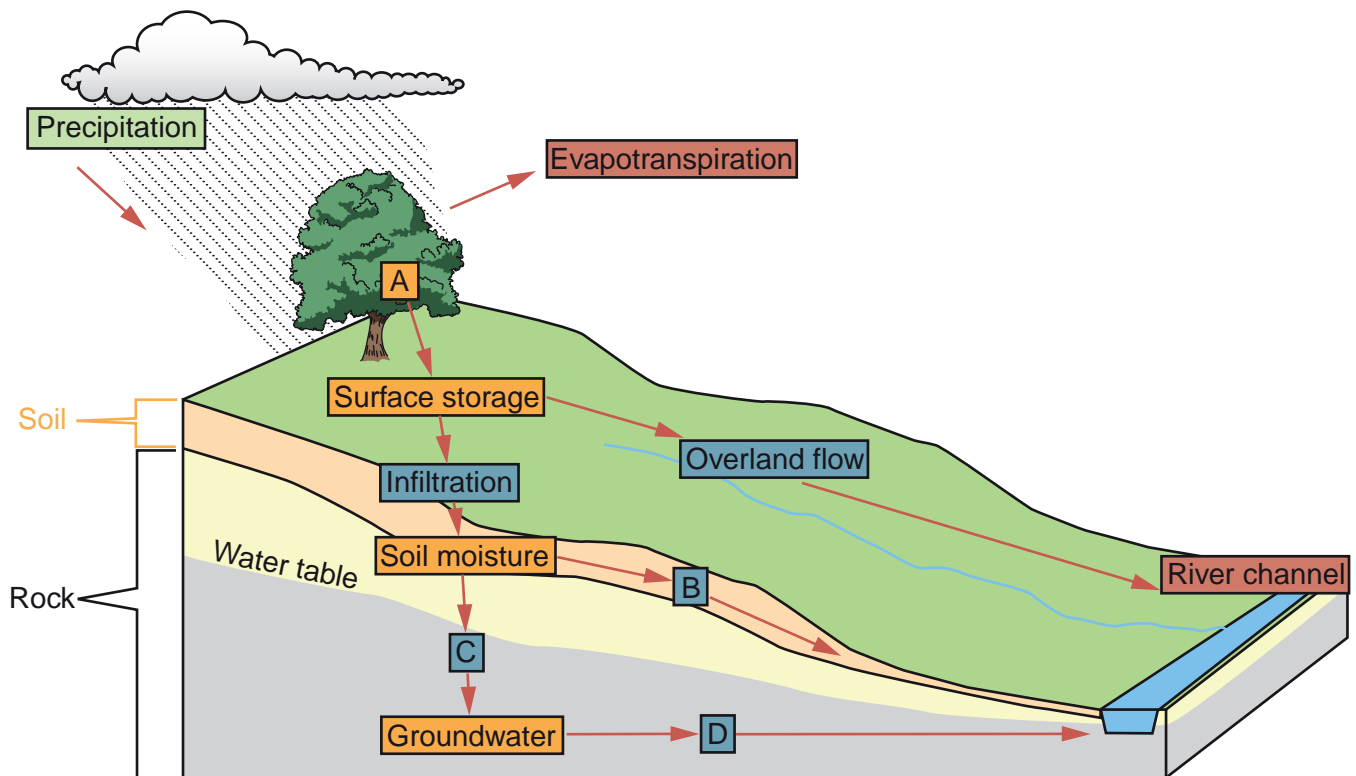
This Insert contains all the Figures and the Photographs referred to in the questions.



This document consists of **7** printed pages and **1** blank page.

Fig. 1 for Question 1

The main features of the hydrological system of a drainage basin

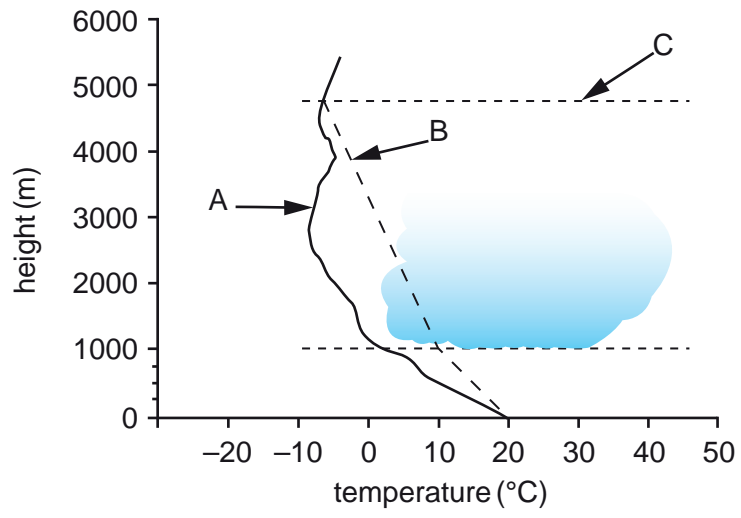


Key

- input
- store
- flow
- output

Fig. 2 for Question 2

Atmospheric lapse rates



4

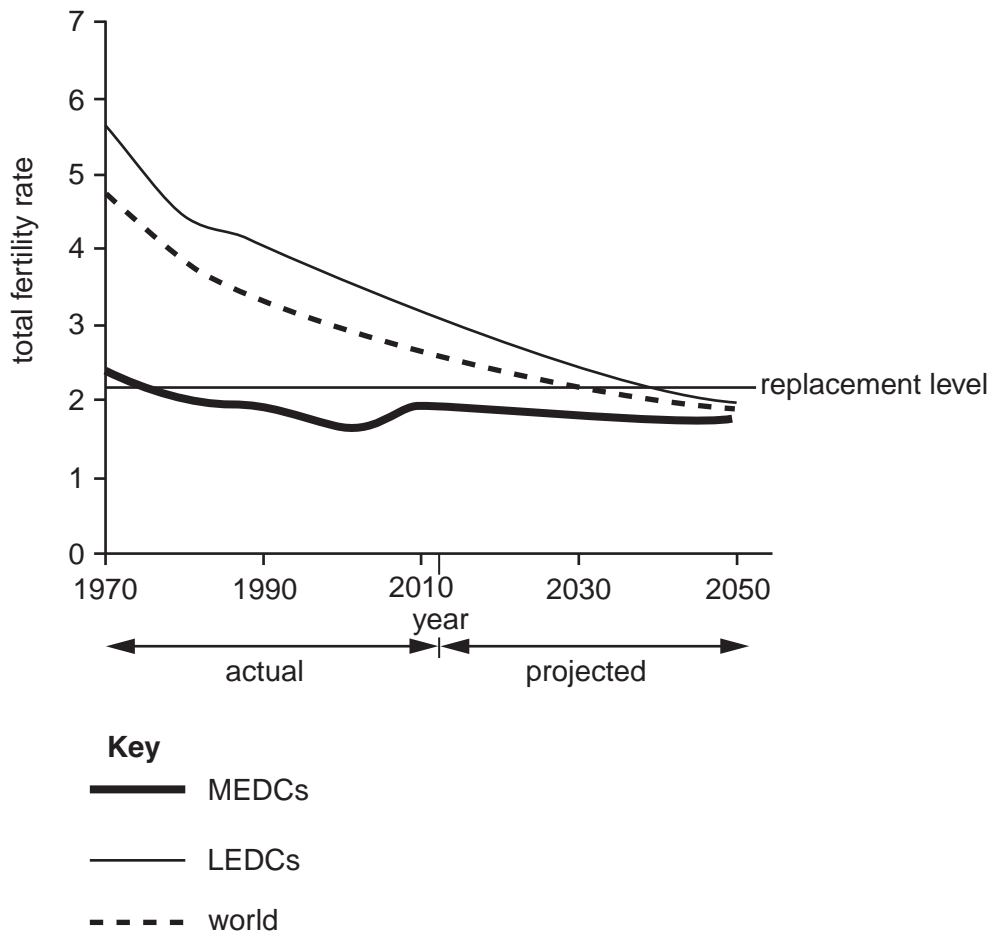
Photograph A for Question 3

A large rock fall



Fig. 3 for Question 4

Actual and projected total fertility rates for MEDCs, LEDCs and the world, 1970 to 2050



6

Photograph B for Question 5

A refugee camp in an LEDC

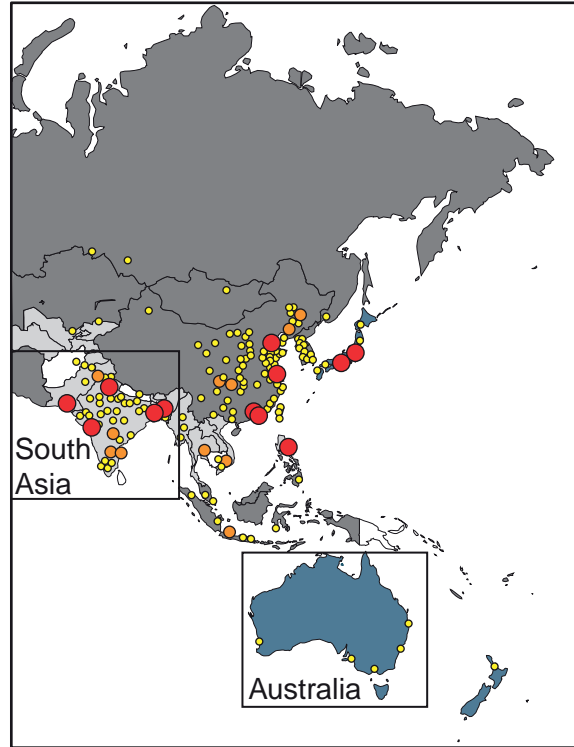


Figs 4A and 4B for Question 6

Percentage urban population and city sizes in Asia and Oceania, 2011 and 2025 (projected)

Fig. 4A

2011



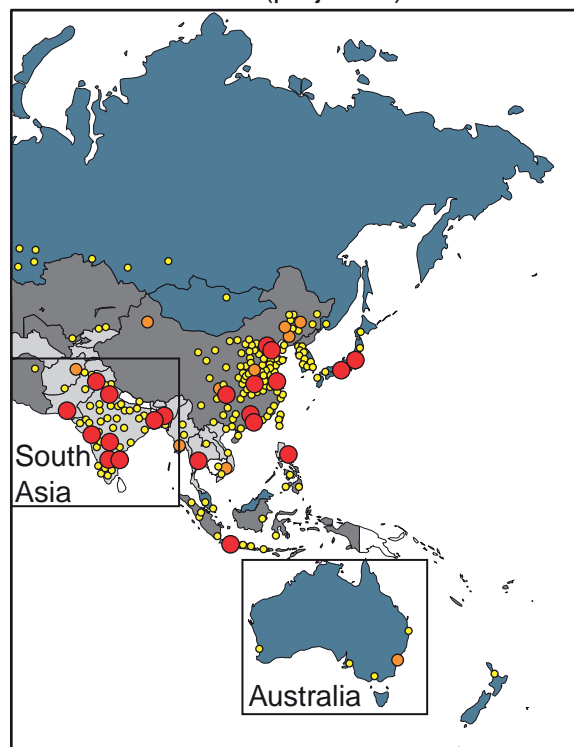
Key

Percentage Urban

- 76–100%
- 51–75%
- 26–50%
- 0–25%

Fig. 4B

2025 (projected)



City Sizes

- 11 million or more
- 6–10 million
- 1–5 million

BLANK PAGE

Permission to reproduce items where third-party owned material protected by copyright is included has been sought and cleared where possible. Every reasonable effort has been made by the publisher (UCLES) to trace copyright holders, but if any items requiring clearance have unwittingly been included, the publisher will be pleased to make amends at the earliest possible opportunity.

To avoid the issue of disclosure of answer-related information to candidates, all copyright acknowledgements are reproduced online in the Cambridge International Examinations Copyright Acknowledgements Booklet. This is produced for each series of examinations and is freely available to download at www.cie.org.uk after the live examination series.

Cambridge International Examinations is part of the Cambridge Assessment Group. Cambridge Assessment is the brand name of University of Cambridge Local Examinations Syndicate (UCLES), which is itself a department of the University of Cambridge.