

|               |                  |      |
|---------------|------------------|------|
| Centre Number | Candidate Number | Name |
|---------------|------------------|------|

UNIVERSITY OF CAMBRIDGE INTERNATIONAL EXAMINATIONS  
General Certificate of Education  
Advanced Subsidiary Level and Advanced Level

**CHEMISTRY**

**9701/04**

Paper 4 Structured Questions

For Examination from 2007

SPECIMEN PAPER

**1 hour 45 minutes**

Candidates answer on the Question Paper.

Additional Materials: Data Booklet

**READ THESE INSTRUCTIONS FIRST**

Write your Centre number, candidate number and name on all the work you hand in.

Write in dark blue or black pen.

You may use a soft pencil for any diagrams, graphs or rough working.

Do not use staples, paper clips, highlighters, glue or correction fluid.

**Section A**

Answer **all** questions.

**Section B**

Answer **all** questions.

You may lose marks if you do not show your workings or if you do not use appropriate units.

At the end of the examination, fasten all your work securely together.

The number of marks is given in brackets [ ] at the end of each question or part question.

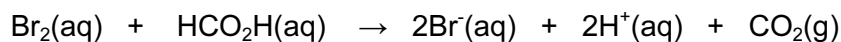
This document consists of **17** printed pages and **1** blank page.



## Section A

Answer **all** the questions in the spaces provided.

- 1 Bromine can react with methanoic acid according to the following equation.



- (a) (i) What maximum volume of gas, measured at r.t.p., would be produced by reacting 3.2 g of bromine?

- (ii) Suggest how the rate of the reaction might be followed.

.....  
.....  
.....  
.....

[5]

- (b) The graph opposite contains information about this reaction.

- (i) What evidence is there to suggest that this reaction is first order with respect to bromine?

.....  
.....

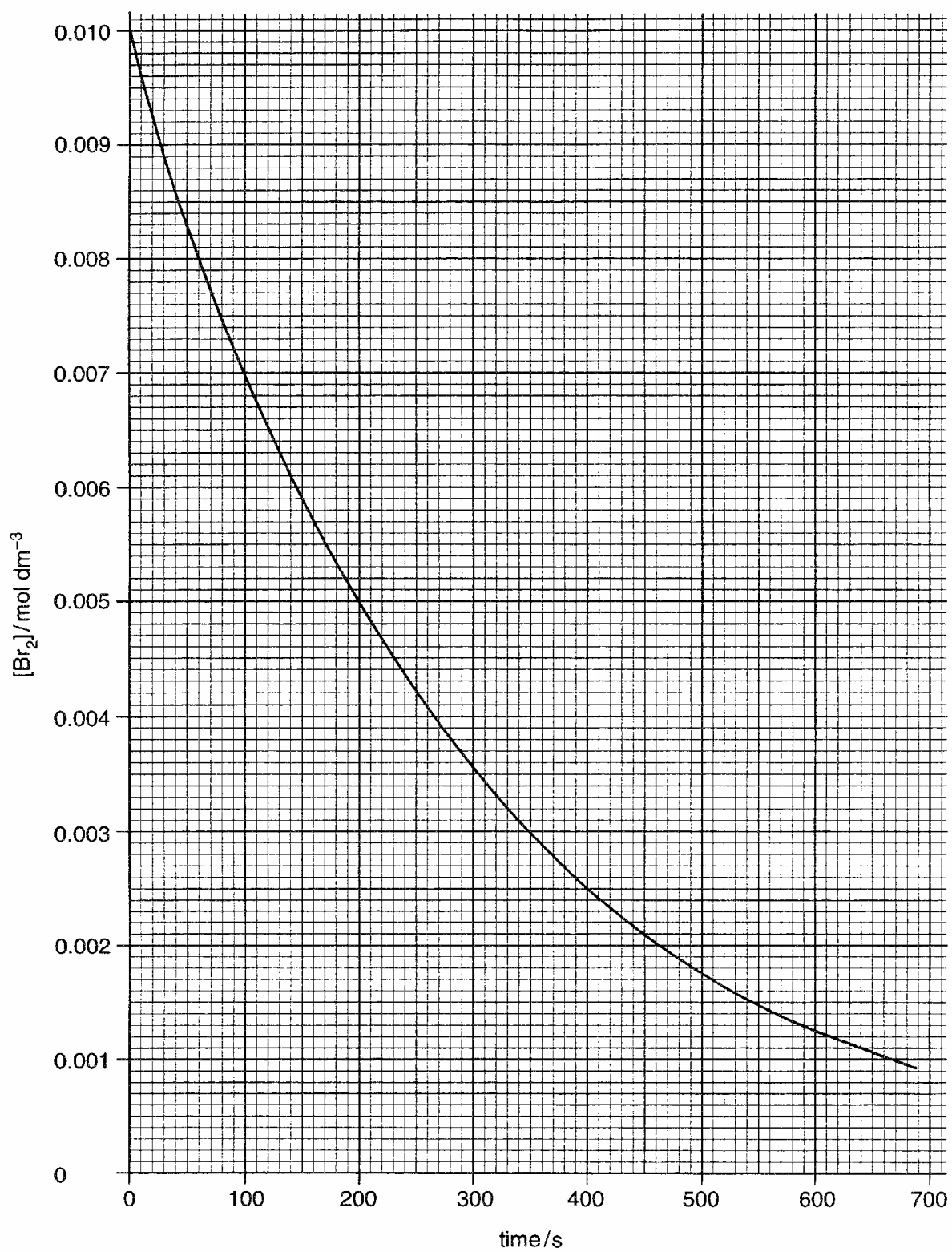
- (ii) Write a simple equation relating the rate of reaction to the concentration of bromine under these conditions.

.....

- (iii) Calculate the half-life of this reaction.

[5]

[Total : 10]



- 2 (a) Define the *standard enthalpy change of formation* of a compound.

.....  
..... [2]

The standard enthalpy change of formation of  $\text{SiCl}_4(\text{g})$  is  $-610 \text{ kJ mol}^{-1}$ .

The standard enthalpy changes of atomisation of the elements silicon and chlorine are  $+338$  and  $+122 \text{ kJ mol}^{-1}$  of atoms respectively.

- (b) Use these values to construct an energy cycle to show the formation of  $\text{SiCl}_4(\text{g})$ .

[2]

- (c) (i) Hence calculate the average bond energy of the Si-Cl bond from these data.

- (ii) Suggest why the calculated value is different from the value given in the *Data Booklet*.

.....  
.....

[2]

(d) Pure silicon is made by reducing  $\text{SiCl}_3\text{H}$  with hydrogen at a high temperature.

(i) Construct a balanced equation for this reaction.

.....

(ii) The bond energy of the Si-Br bond is  $298 \text{ kJ mol}^{-1}$ . Use this value, and other bond energy values given in the *Data Booklet* to suggest whether the reaction between  $\text{SiBr}_3\text{H}$  and hydrogen would be more or less endothermic than the reaction between  $\text{SiCl}_3\text{H}$  and hydrogen.

.....

.....

.....

(iii) State a use of pure silicon.

.....

[4]

[Total : 10]

- 3 Agricultural lime is manufactured from limestone (calcium carbonate) by first heating the rock to a high temperature in a lime kiln. The product is allowed to cool and a calculated amount of water is added. A highly exothermic reaction takes place and a white powder called 'slaked lime' is produced.

(a) Write balanced equations for these **two** reactions.

.....  
..... [2]

(b) Give **two** reasons why lime is used in agriculture.

.....  
..... [2]

(c) How does the temperature required to decompose the carbonates of Group II elements vary down the group, and why is this so?

.....  
.....  
.....  
..... [3]

(d) The mineral dolomite is a double carbonate of magnesium and calcium, with the formula  $\text{CaMg}(\text{CO}_3)_2$ . When 1.000 g of an impure sample of dolomite was completely dissolved in an excess of hydrochloric acid, 0.450 g of carbon dioxide was given off.

(i) Write a balanced equation for the reaction.

.....

(ii) Calculate the percentage purity of the dolomite.

[3]

[Total : 10]

4 (a) State the electronic configurations of

(i) the Cu atom, .....

(ii) the Cu<sup>+</sup> ion, .....

(iii) the Cu<sup>2+</sup> ion. ....

[2]

(b) Explain the origin of colour in transition metal compounds, and use your explanation to suggest why copper(I) chloride is white, whereas copper(II) chloride is blue.

.....  
.....  
.....  
.....  
.....  
.....  
..... [4]

(c) (i) Write equations to show the reactions that occur when dilute ammonia solution is slowly added to a solution of CuCl<sub>2</sub> until the ammonia is in excess.

.....  
.....  
.....

(ii) What type of chemical reaction is occurring? Explain your answer.

.....  
.....  
.....

[4]

[Total: 10]



(ii) The action of heat on the hydrogen halides.

.....

.....

.....

.....

.....

.....

.....

.....

.....

.....

[8]

[Total : 10]

6 An organic compound, **A**, has the composition by mass C, 40.0%; H, 6.65%; O, 53.3%.

(a) Show that the empirical formula of **A** is  $\text{CH}_2\text{O}$ .

[1]

(b) **A** shows the following properties or reactions. State what can be deduced about **A** from each of these.

(i) It is optically active.

.....  
.....

(ii) It gives a brisk effervescence with aqueous sodium carbonate.

.....  
.....

(iii) It gives a yellow precipitate when warmed with alkaline aqueous iodine.

.....  
.....

[3]

(c) Suggest an identity for **A** and draw its displayed formula.

[1]

(d) Give the displayed formula of the organic product formed when **A** is warmed with acidified potassium dichromate(VI).

[1]

- (e) When **A** is warmed with concentrated sulphuric acid, a cyclic compound of molecular formula  $C_6H_8O_4$  can be isolated.

Suggest a displayed formula for this cyclic compound, and state what functional group is present in the molecule.

[2]

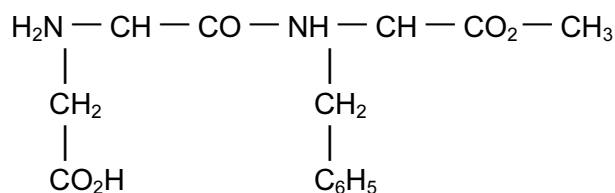
- (f) **A** has a non optically active isomer, **B**. Under the reaction conditions described in (e), compound **B** produces compound **C**,  $C_3H_4O_2$ . Suggest a structure for **C**.

[2]

[Total : 10]

- 7 *Aspartame* is a synthetic sweetening agent that is 180 times as sweet as sugar.

For  
Examiner's  
Use



*aspartame*

- (a) (i) Name **four** different functional groups in the *aspartame* molecule.

1 ..... 2 .....  
3 ..... 4 .....

- (ii) Identify **two** functional groups in *aspartame* which contribute to its solubility in water. Give a reason for your answer.

1 ..... 2 .....

Reason .....

.....

[4]

- (b) (i) Suggest conditions and reagents that could be used to hydrolyse *aspartame* into its constituent parts.

.....

.....

- (ii) Draw the structural formulae of all of the organic molecules obtained by hydrolysing *aspartame*.

[5]

- (c) Suggest why *aspartame* is not used as a sweetening agent in baked products.

..... [1]

[Total : 10]

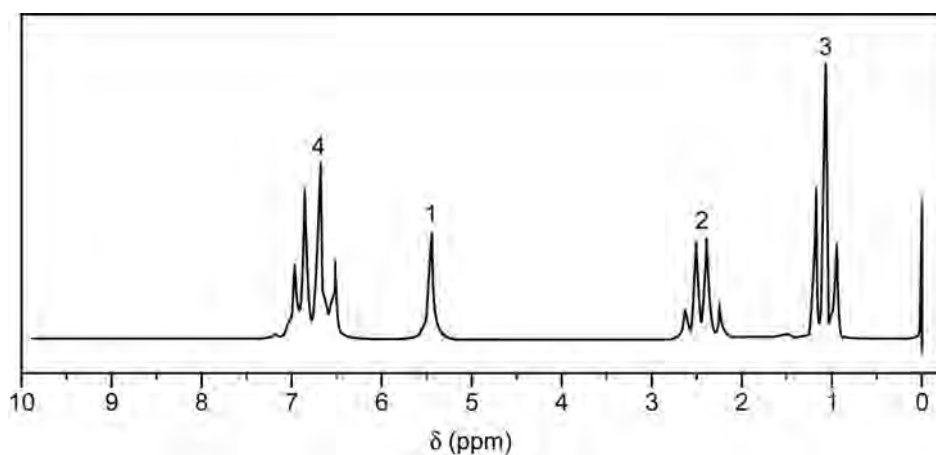


- 9 (a) An aromatic compound **D**, of  $M_r$  122, is a possible sex attractant for insects. It has the following composition by mass: C, 78.7%; H, 8.2%; O, 13.1%.

What is the molecular formula of **D**?

[3]

- (b) The NMR spectrum of **D** is shown below.



Identify the parts of the molecule responsible for each group of peaks. Use your answer to deduce a structure for **D**, explaining your reasoning.

.....  
.....  
..... [5]

- (c) Explain what effect you would expect the addition of a small amount of  $D_2O$  to have on the NMR spectrum of **D**.

.....  
.....  
..... [2]

- (d) An isomer of **D** shows no effect on the NMR spectrum on adding  $D_2O$ .

Draw the structure of the isomer and suggest how its NMR spectrum would differ from that of **D**.

.....  
..... [3]

[Total : 13]

- 10 Read the passage about the production of ethanol for fuel, and then answer the questions.

Sugar cane is the world's largest source of fermentation ethanol. Ethanol can be produced by converting the starch content of biomass feedstocks, such as sugar cane, into alcohol. Yeast is used to break down the complex sugars of starch into simpler sugars, which are fermented to form ethanol. A further advantage is that bagasse, the remains of the cane after the sugar is extracted, and the tops and leaves of the sugar cane can be used as a fuel for electricity production. An efficient ethanol distillery using sugar cane by-products can therefore be self-sufficient and also generate a surplus of electricity.

There is a second process that utilises biomass feedstocks to produce ethanol. The main carbohydrate constituent of these feedstocks is cellulose, which, like starch, is a sugar polymer that can be broken down by hydrolysis into simpler sugars. The new process uses enzymatic hydrolysis or acid hydrolysis of cellulose to produce simple sugars for fermentation.

The use of bagasse as the cellulose source in the new process could allow off-season production of ethanol with very little new equipment. This process is relatively new and is not yet commercially available, but potentially can use a much wider variety of abundant, inexpensive feedstocks. Alcohol fuels have been developed in a number of African countries – Kenya, Malawi, South Africa and Zimbabwe – currently producing sugar, with others, including Mauritius, Swaziland and Zambia also having great potential.

Ethanol has different chemical properties from gasoline. Although one litre of ethanol has about two-thirds of the energy of a litre of gasoline, tuning the engine for ethanol can make up as much as half the difference. Furthermore, should there be a spill, ethanol can be dealt with more quickly and easily than gasoline.

Using ethanol even in low-level blends (e.g. E10 – which is 10% ethanol, 90% gasoline) can have environmental benefits. Tests show that E10 produces less carbon monoxide, sulphur dioxide and carbon dioxide than gasoline. Higher blends (E85 – 15% gasoline), or even neat ethanol burn with less of almost all these pollutants.

- (a) Explain **two** ways in which *bagasse* can be used to reduce the cost of ethanol production.

(i) .....

.....

.....

(ii) .....

.....

.....

[2]

- (b) In addition to ethanol, what other product is formed in the fermentation of sugars by yeast?

..... [1]

- (c) Suggest an equation to show the hydrolysis of cellulose in *bagasse* to form fermentable sugars with the molecular formula  $C_6H_{12}O_6$ .

[1]

- (d) Using your knowledge of chemical bonding, suggest why a spill of ethanol is more easily dealt with than a spill of gasoline.

.....  
.....  
..... [3]

[Total : 7]

**BLANK PAGE**

---

*Copyright Acknowledgements:*

Permission to reproduce items where third-party owned material protected by copyright is included has been sought and cleared where possible. Every reasonable effort has been made by the publisher (UCLES) to trace copyright holders, but if any items requiring clearance have unwittingly been included, the publisher will be pleased to make amends at the earliest possible opportunity.

University of Cambridge International Examinations is part of the Cambridge Assessment Group. Cambridge Assessment is the brand name of University of Cambridge Local Examinations Syndicate (UCLES), which is itself a department of the University of Cambridge.