

CANDIDATE
NAME

--

CENTRE
NUMBER

--	--	--	--	--

CANDIDATE
NUMBER

--	--	--	--

FURTHER MATHEMATICS

9231/23

Paper 2

October/November 2017

3 hours

Candidates answer on the Question Paper.

Additional Materials: List of Formulae (MF10)

READ THESE INSTRUCTIONS FIRST

Write your Centre number, candidate number and name in the spaces at the top of this page.

Write in dark blue or black pen.

You may use an HB pencil for any diagrams or graphs.

Do not use staples, paper clips, glue or correction fluid.

DO NOT WRITE IN ANY BARCODES.

Answer **all** the questions.

Give non-exact numerical answers correct to 3 significant figures, or 1 decimal place in the case of angles in degrees, unless a different level of accuracy is specified in the question.

Where a numerical value is necessary, take the acceleration due to gravity to be 10 m s^{-2} .

The use of a calculator is expected, where appropriate.

Results obtained solely from a graphic calculator, without supporting working or reasoning, will not receive credit.

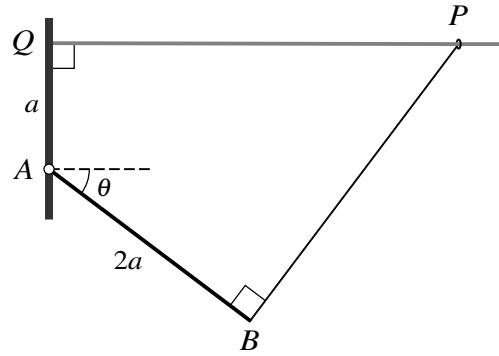
You are reminded of the need for clear presentation in your answers.

At the end of the examination, fasten all your work securely together.

The number of marks is given in brackets [] at the end of each question or part question.

This document consists of **23** printed pages and **1** blank page.





A small ring P of weight W is free to slide on a rough horizontal wire, one end of which is attached to a vertical wall at Q . The end A of a thin uniform rod AB of length $2a$ and weight $\frac{5}{2}W$ is freely hinged to the wall at the point A which is a distance a vertically below Q . A light elastic string of natural length $2a$ has one end attached to the ring P and the other end attached to the rod at B . The string is at right angles to the rod and A, B, P and Q lie in a vertical plane. The system is in limiting equilibrium with AB making an angle θ with the horizontal, where $\sin \theta = \frac{3}{5}$ (see diagram).

- (i) Find the tension in the string in terms of W . [2]

.....

.....

.....

.....

.....

- (ii) Find the coefficient of friction between the ring and the wire. [2]

.....

.....

.....

.....

.....

- (iii) Find the magnitude of the resultant force on the rod at the hinge in terms of W . [3]

.....

.....

.....

6 A pair of fair dice is thrown repeatedly until a pair of sixes is obtained. The number of throws taken is denoted by the random variable X .

(i) Find the mean value of X . [2]

.....

.....

.....

.....

.....

.....

.....

(ii) Find the probability that exactly 12 throws are required to obtain a pair of sixes. [2]

.....

.....

.....

.....

.....

.....

.....

(iii) Find the probability that more than 12 throws are required to obtain a pair of sixes. [2]

.....

.....

.....

.....

.....

.....

.....

7 The random variable X has probability density function f given by

$$f(x) = \begin{cases} 0.2e^{-0.2x} & x \geq 0, \\ 0 & \text{otherwise.} \end{cases}$$

(i) Find the distribution function of X . [2]

.....

.....

.....

.....

.....

.....

.....

(ii) Find $P(X > 2)$. [2]

.....

.....

.....

.....

.....

(iii) Find the median of X . [3]

.....

.....

.....

.....

.....

.....

.....

.....

.....

.....

.....

.....

.....

.....

.....

.....

.....

.....

.....

.....

.....

.....

.....

.....

.....

.....

.....

.....

.....

.....

.....

.....

.....

The land areas and populations for another randomly chosen sample of cities, this time of size n , give a product moment correlation coefficient of 0.651. Using a test at the 1% significance level, there is evidence of non-zero correlation between the variables.

(iii) Find the least possible value of n , justifying your answer. [2]

.....

.....

.....

.....

.....

.....

.....

.....

.....

.....

.....

.....

.....

.....

.....

.....

.....

.....

.....

.....

.....

.....

OR

A large number of people attended a course to improve the speed of their logical thinking. The times taken to complete a particular type of logic puzzle at the beginning of the course and at the end of the course are recorded for each person. The time taken, in minutes, at the beginning of the course is denoted by x and the time taken, in minutes, at the end of the course is denoted by y . For a random sample of 9 people, the results are summarised as follows.

$$\Sigma x = 45.3 \quad \Sigma x^2 = 245.59 \quad \Sigma y = 40.5 \quad \Sigma y^2 = 195.11 \quad \Sigma xy = 218.72$$

Ken attended the course, but his time to complete the puzzle at the beginning of the course was not recorded. His time to complete the puzzle at the end of the course was 4.2 minutes.

- (i) By finding, showing all necessary working, the equation of a suitable regression line, find an estimate for the time that Ken would have taken to complete the puzzle at the beginning of the course. [5]

.....

.....

.....

.....

.....

.....

.....

.....

.....

.....

.....

.....

.....

.....

.....

.....

.....

.....

.....

.....

.....

.....

.....

BLANK PAGE

Permission to reproduce items where third-party owned material protected by copyright is included has been sought and cleared where possible. Every reasonable effort has been made by the publisher (UCLES) to trace copyright holders, but if any items requiring clearance have unwittingly been included, the publisher will be pleased to make amends at the earliest possible opportunity.

To avoid the issue of disclosure of answer-related information to candidates, all copyright acknowledgements are reproduced online in the Cambridge International Examinations Copyright Acknowledgements Booklet. This is produced for each series of examinations and is freely available to download at www.cie.org.uk after the live examination series.

Cambridge International Examinations is part of the Cambridge Assessment Group. Cambridge Assessment is the brand name of University of Cambridge Local Examinations Syndicate (UCLES), which is itself a department of the University of Cambridge.